

Test square: 10cm x 10cm / 4 inches x 4 inches

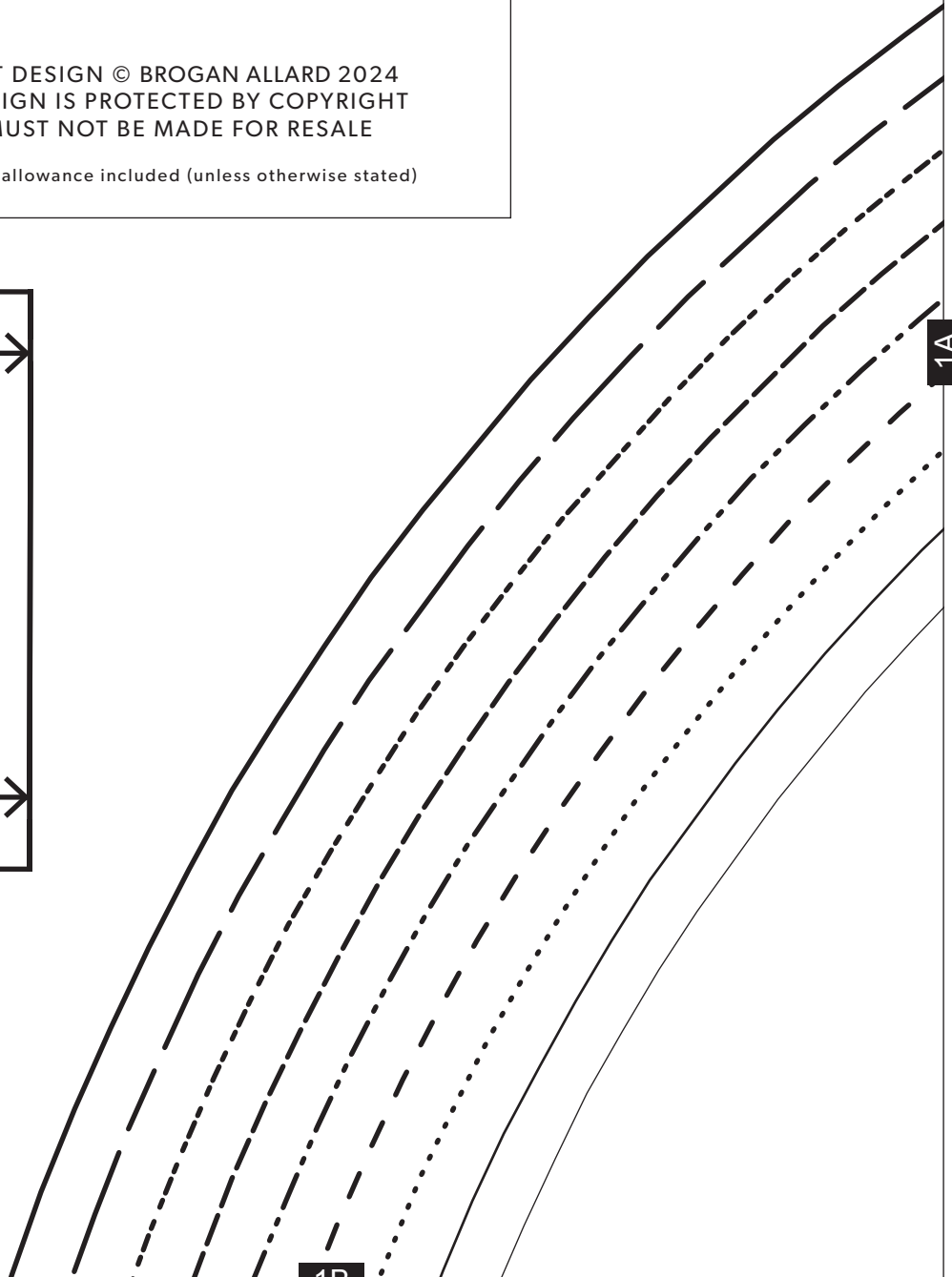
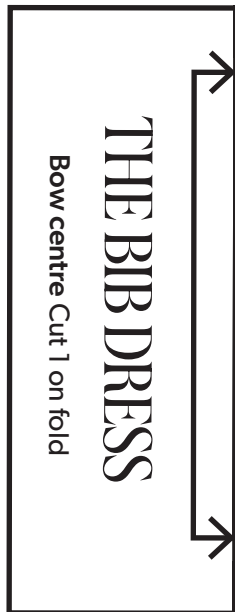
DOPAMINE DRESSMAKING

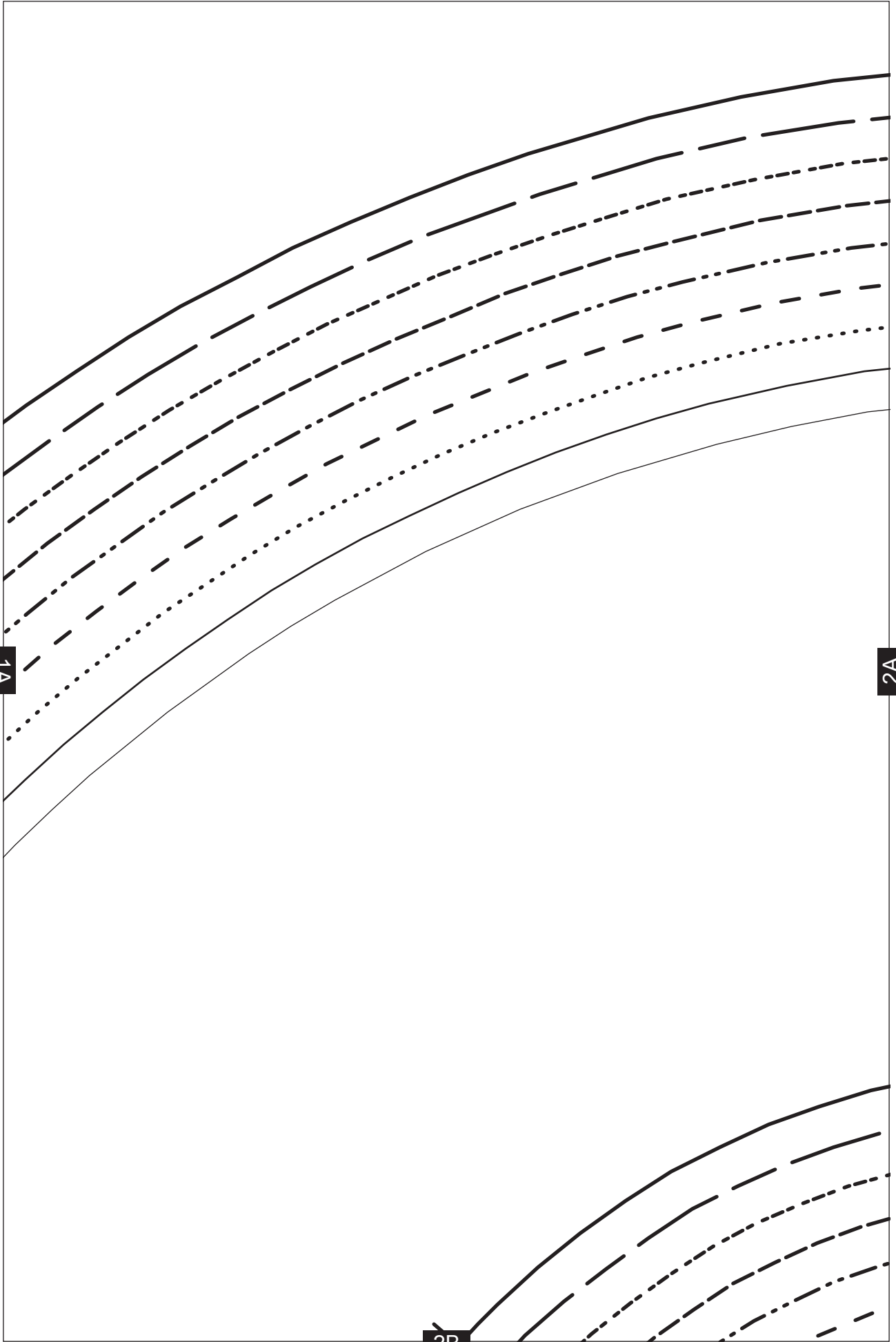
—

THE BIB DRESS

PROJECT DESIGN © BROGAN ALLARD 2024
THIS DESIGN IS PROTECTED BY COPYRIGHT
AND MUST NOT BE MADE FOR RESALE

1cm (3/8in) seam allowance included (unless otherwise stated)

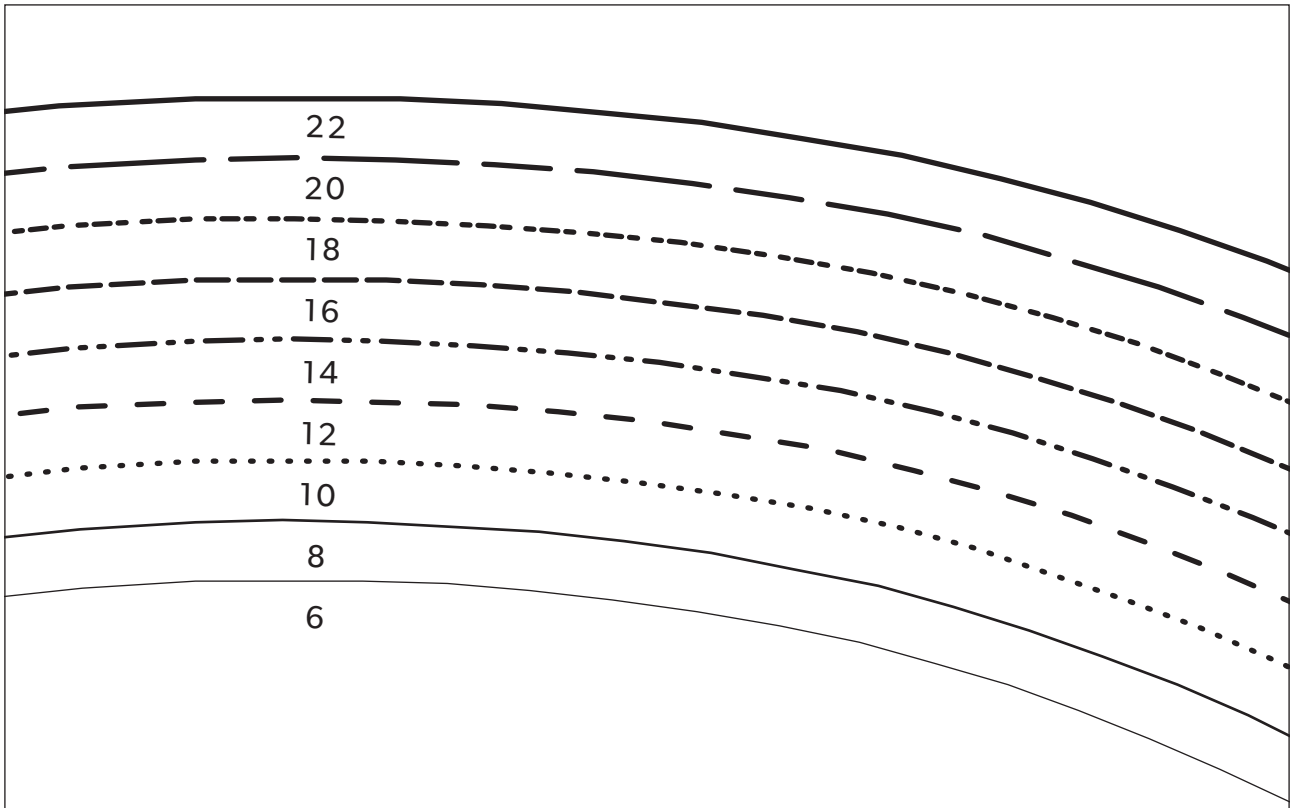




1A

2A

2B

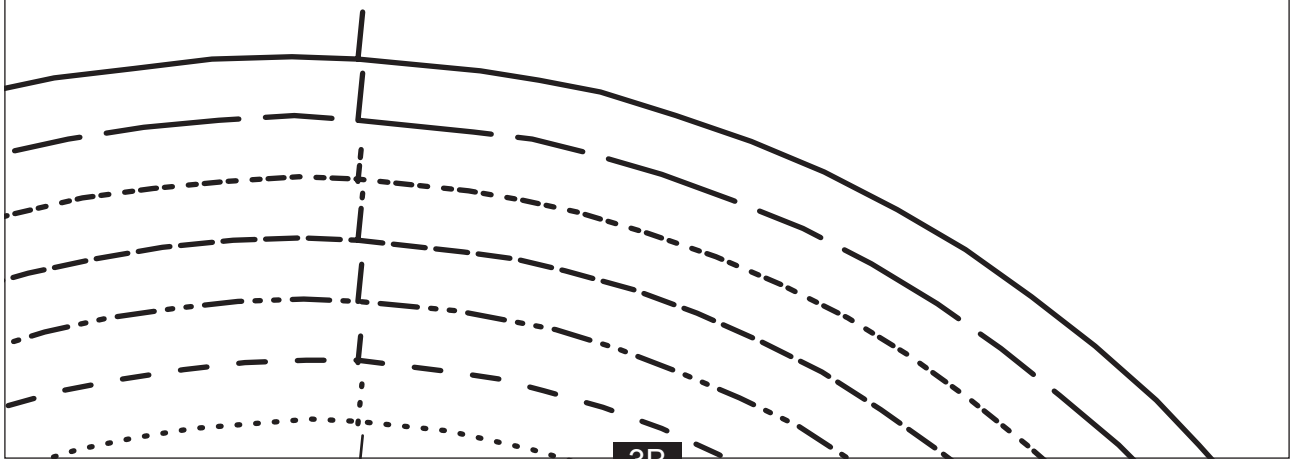


2A

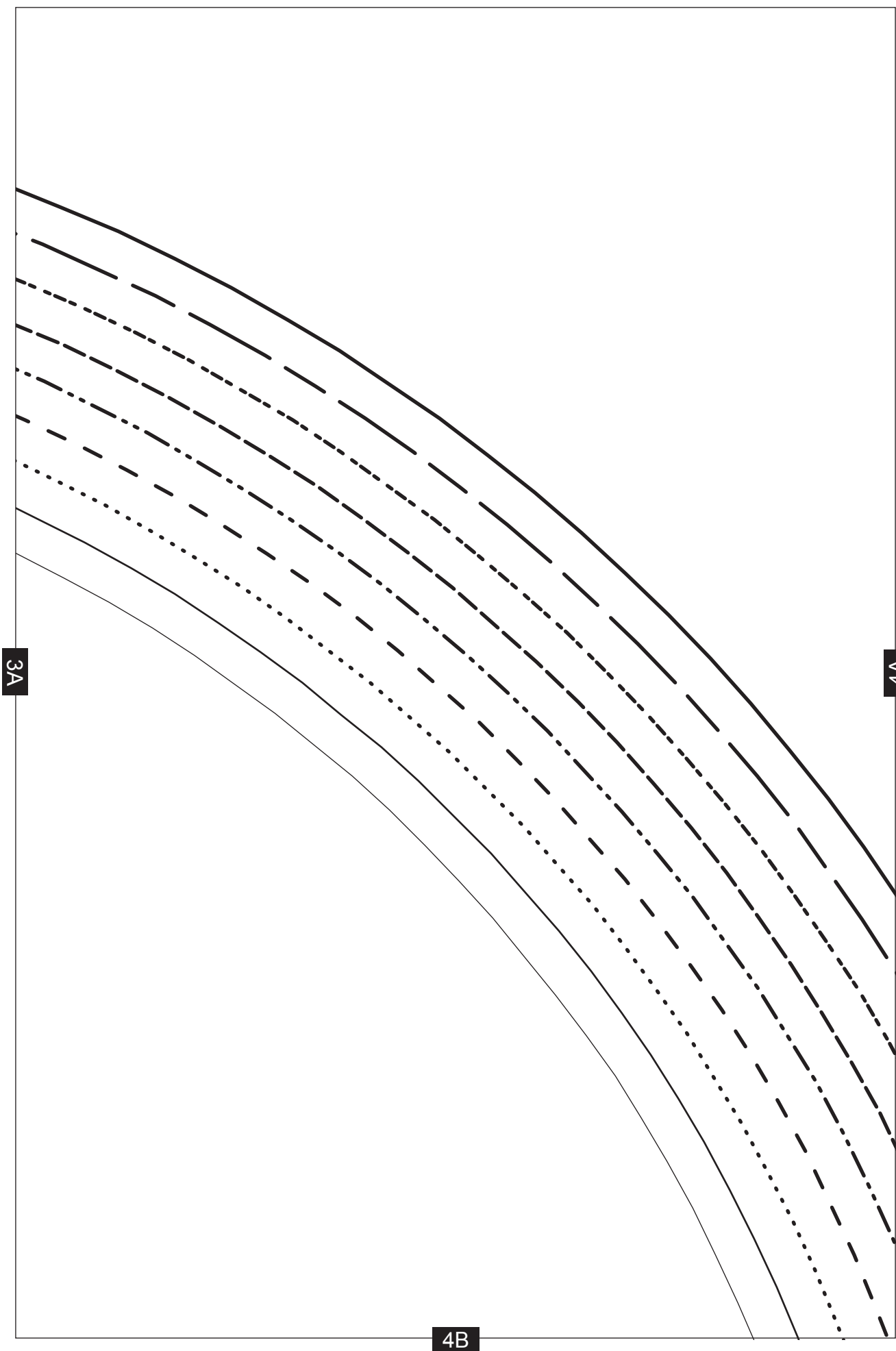
THE BIB DRESS

3A

Top peplum
Cut 1



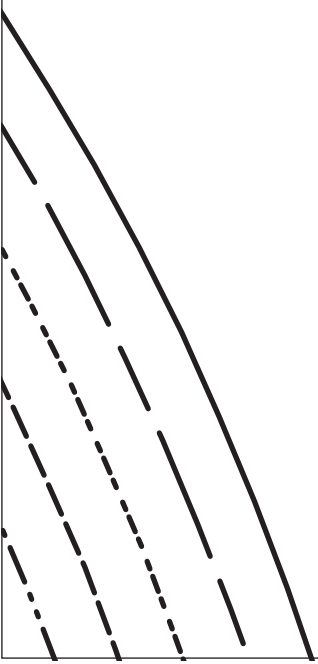
3B



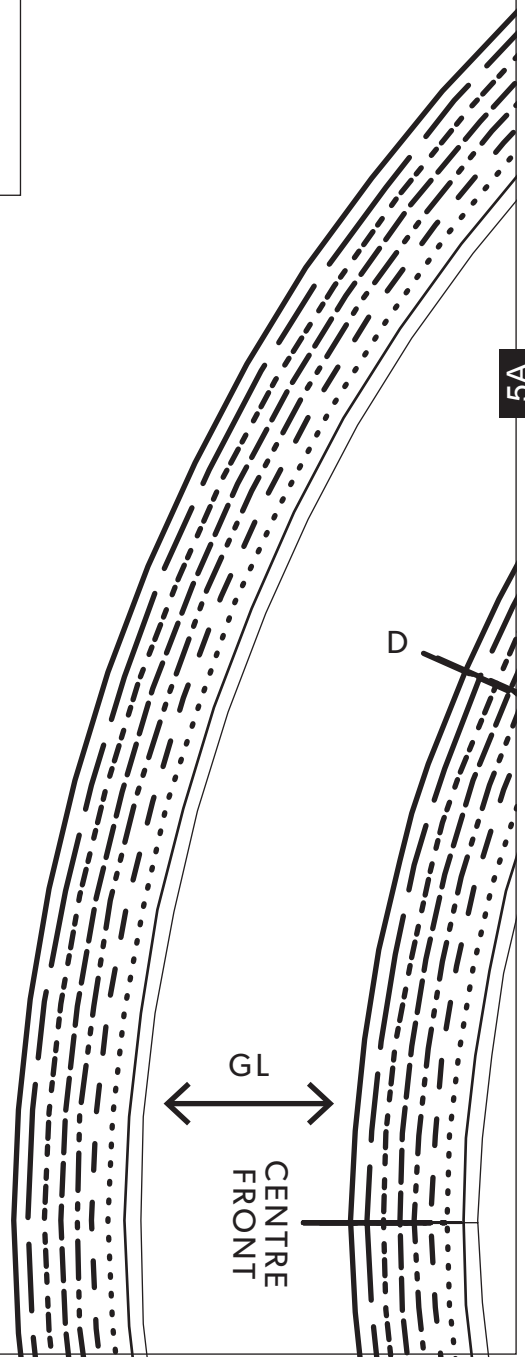
Sizing Key

—————	6
—————	8
.....	10
- - - - -	12
- . - . -	14
- - - - -	16
- . - . -	18
- - - - -	20
—————	22

4A



5A



5B

22
20
18
16
14
12
10
8
6

5A

C

6A

THE BIB DRESS

Cuff frill Cut 2

GL

6B



THE BIB DRESS

Bib frill Cut 1

B

A

6A

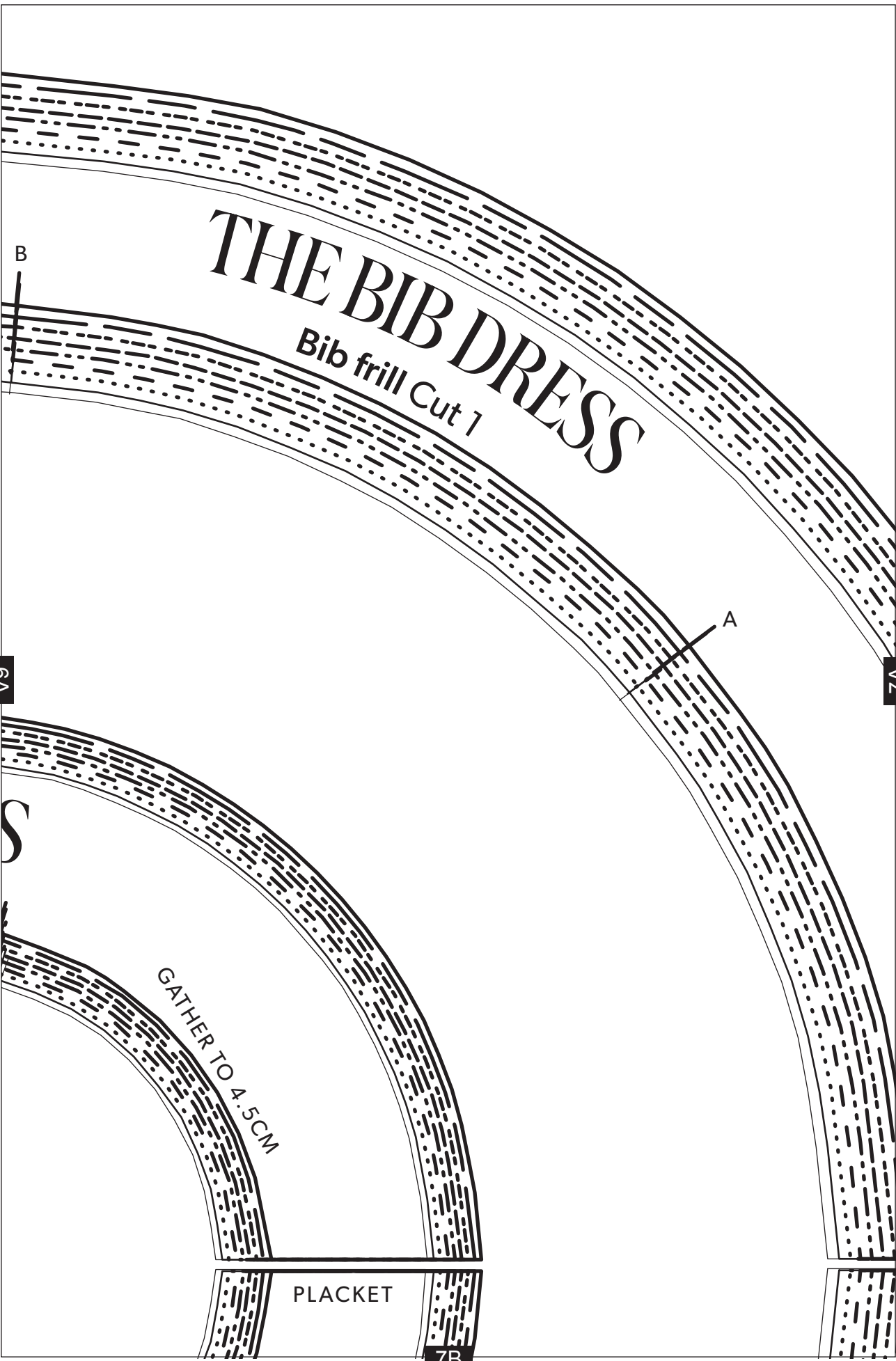
7A

S

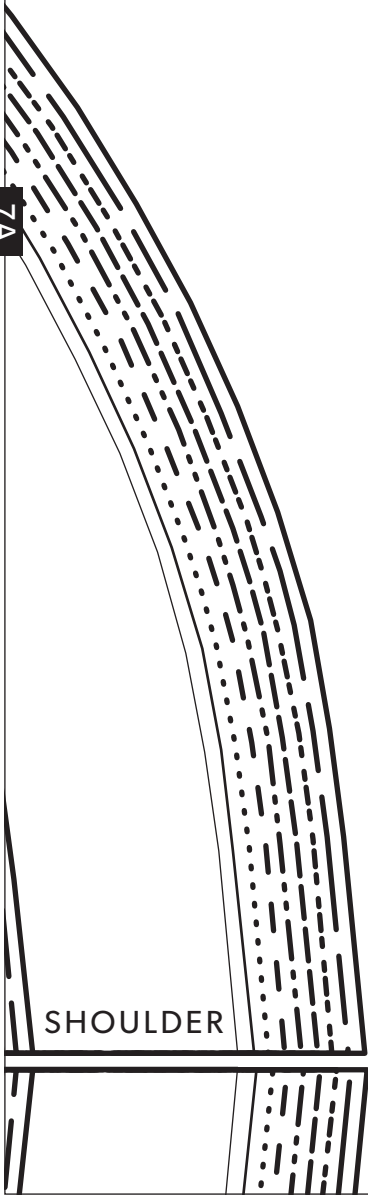
GATHER TO 4.5CM

PLACKET

7B

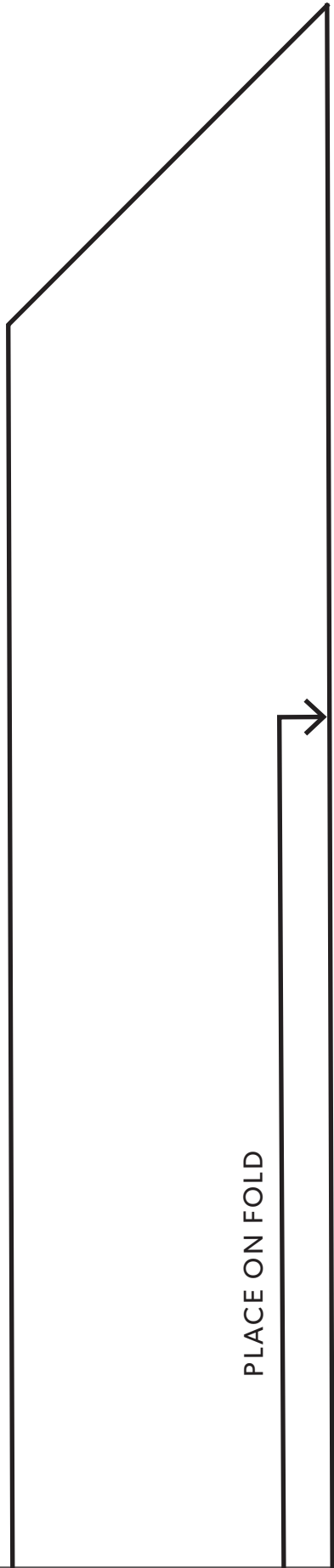


7A

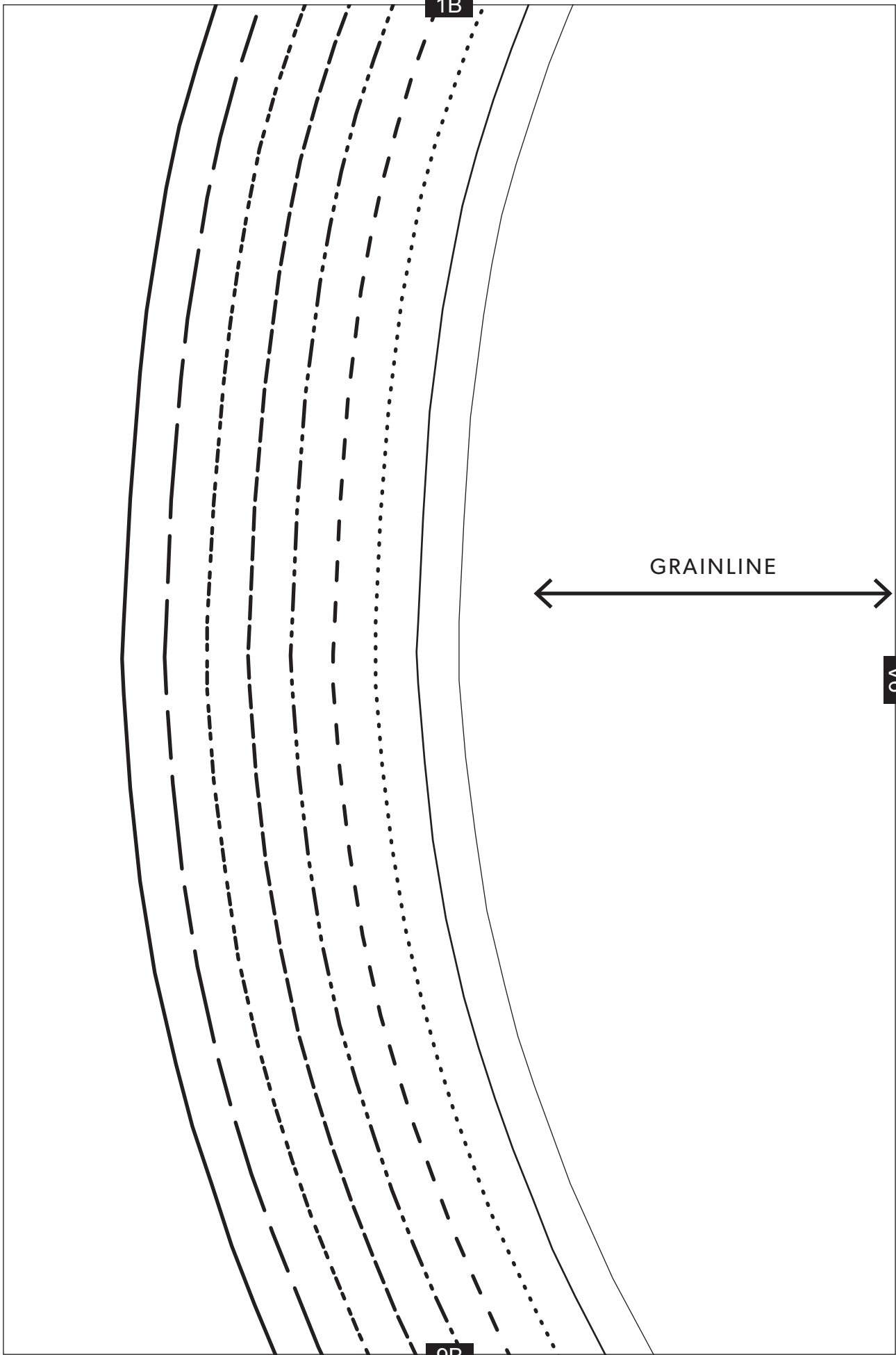


SHOULDER

8B



PLACE ON FOLD



9A

CENTRE FRONT

2B

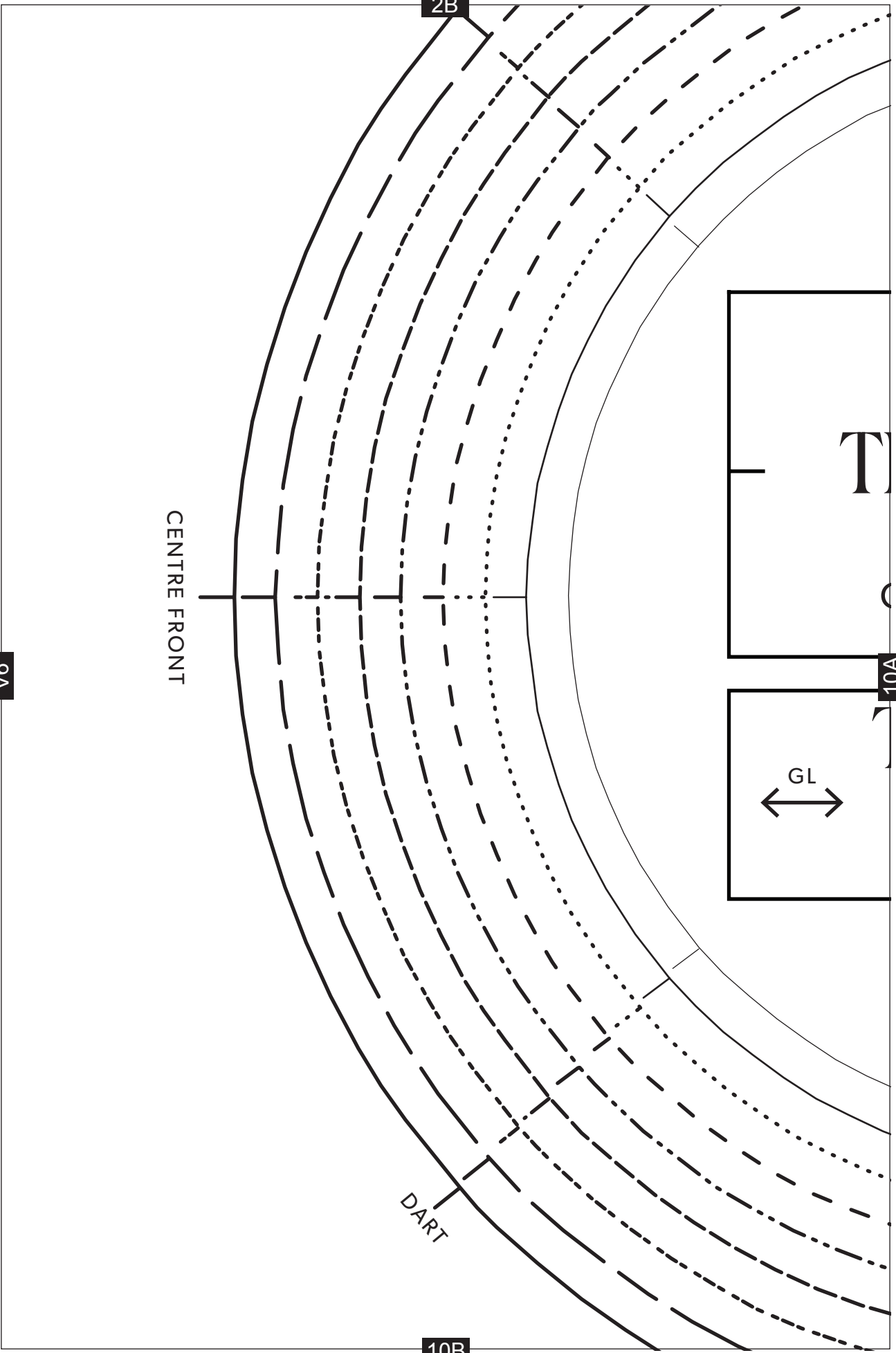
DART

10B

10A

GL

T
C



3B

GRAINLINE

THE BIB DRESS

Sleeve placket

Cut 2 main + 2 interfacing

10A

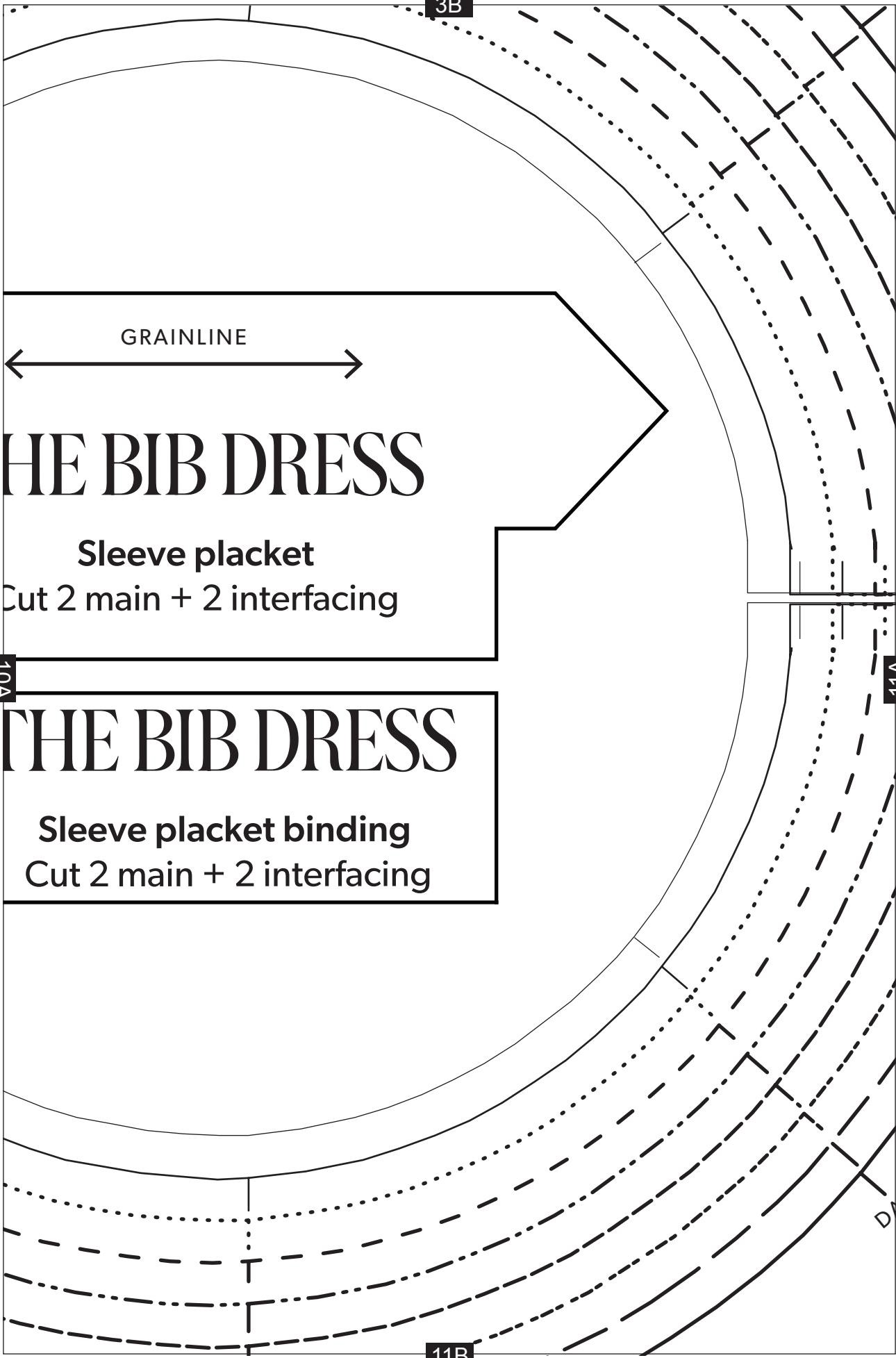
THE BIB DRESS

Sleeve placket binding

Cut 2 main + 2 interfacing

11A

11B



4B

CENTRE
BACK

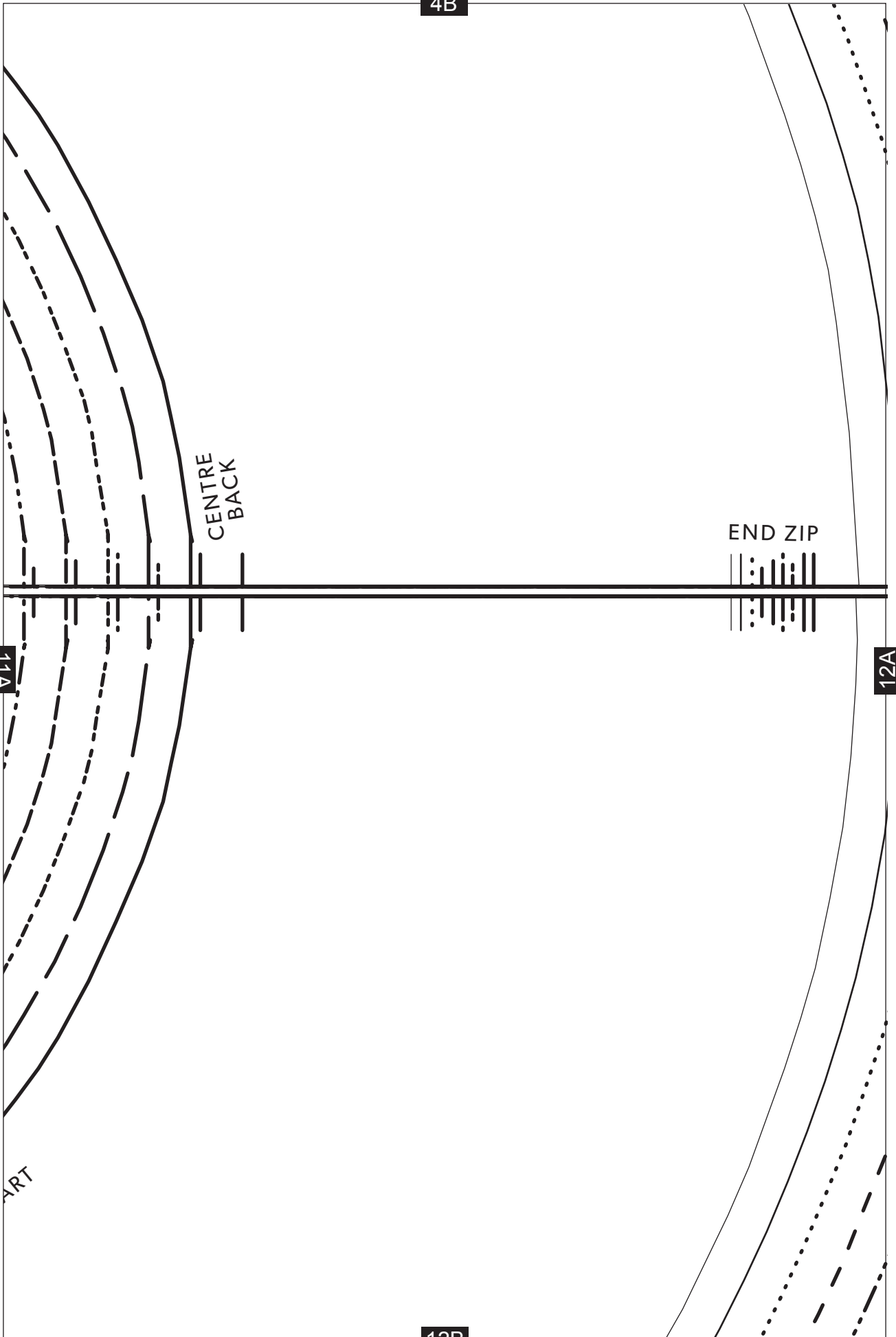
END ZIP

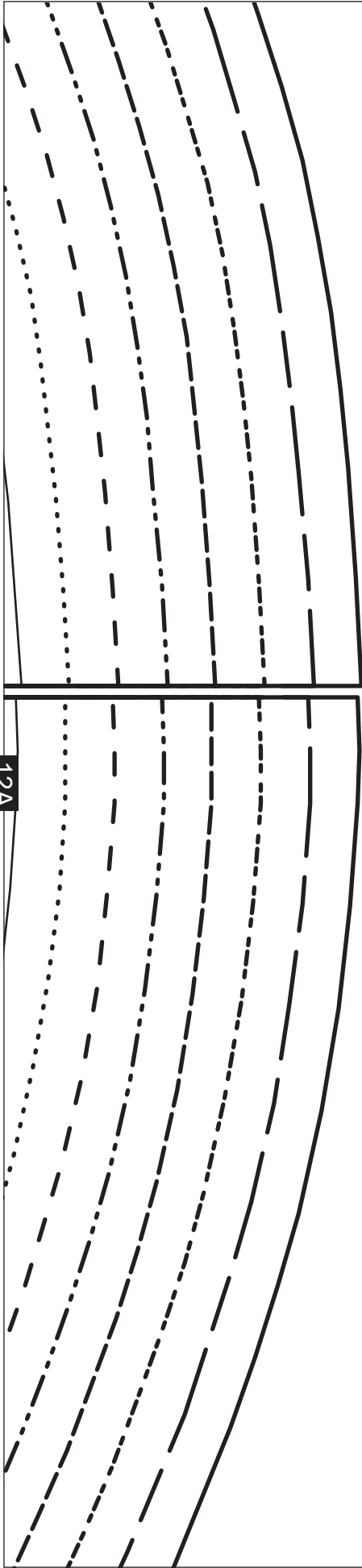
11A

12A

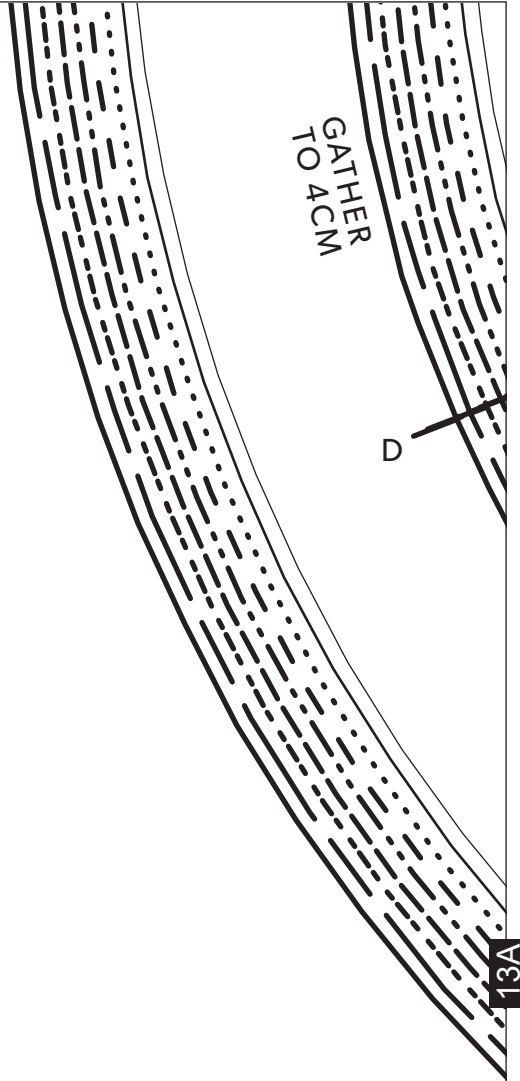
12B

ART





5B



13B

6B

GATHER TO 180

GATHER TO 6CM

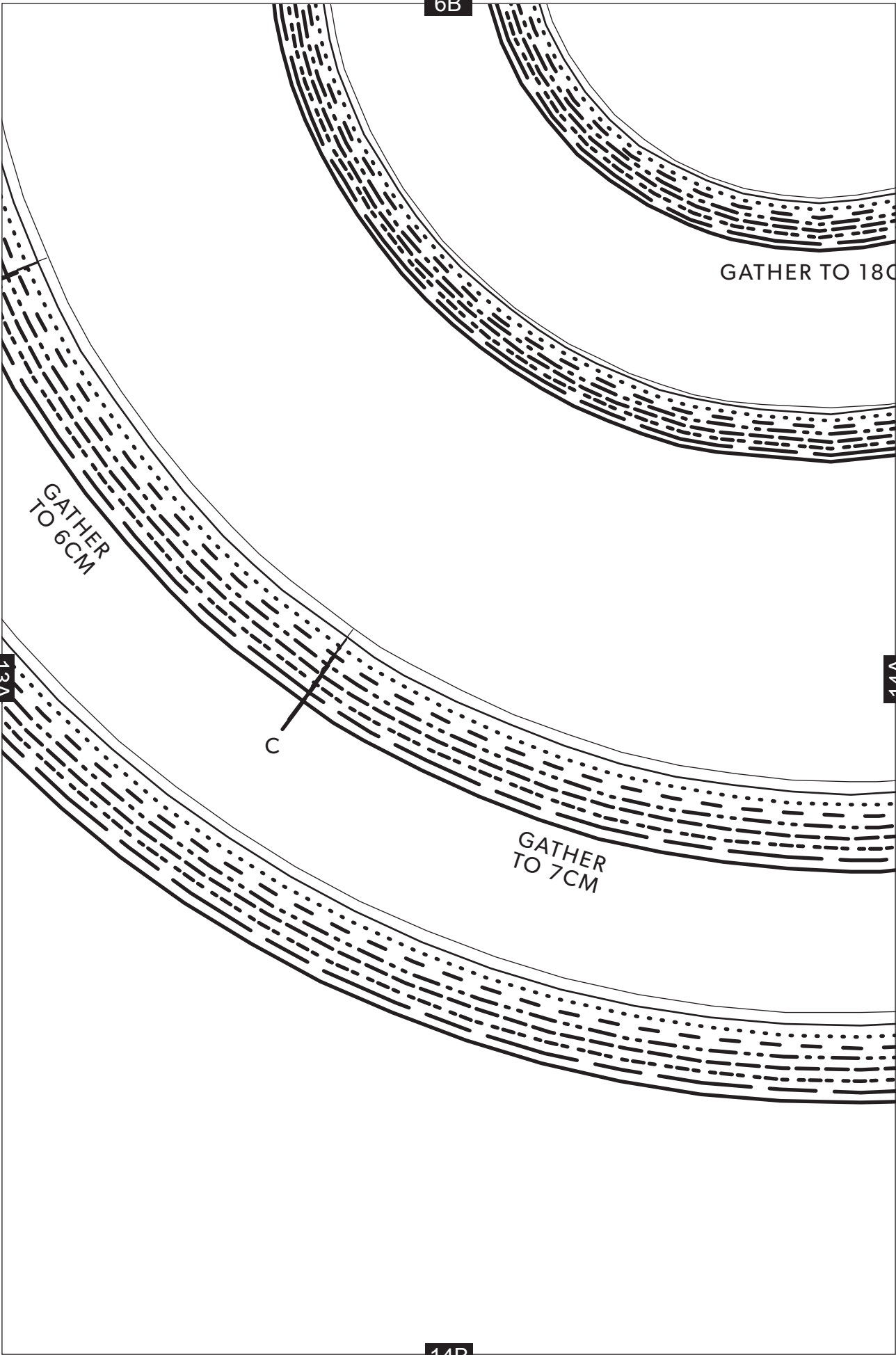
13A

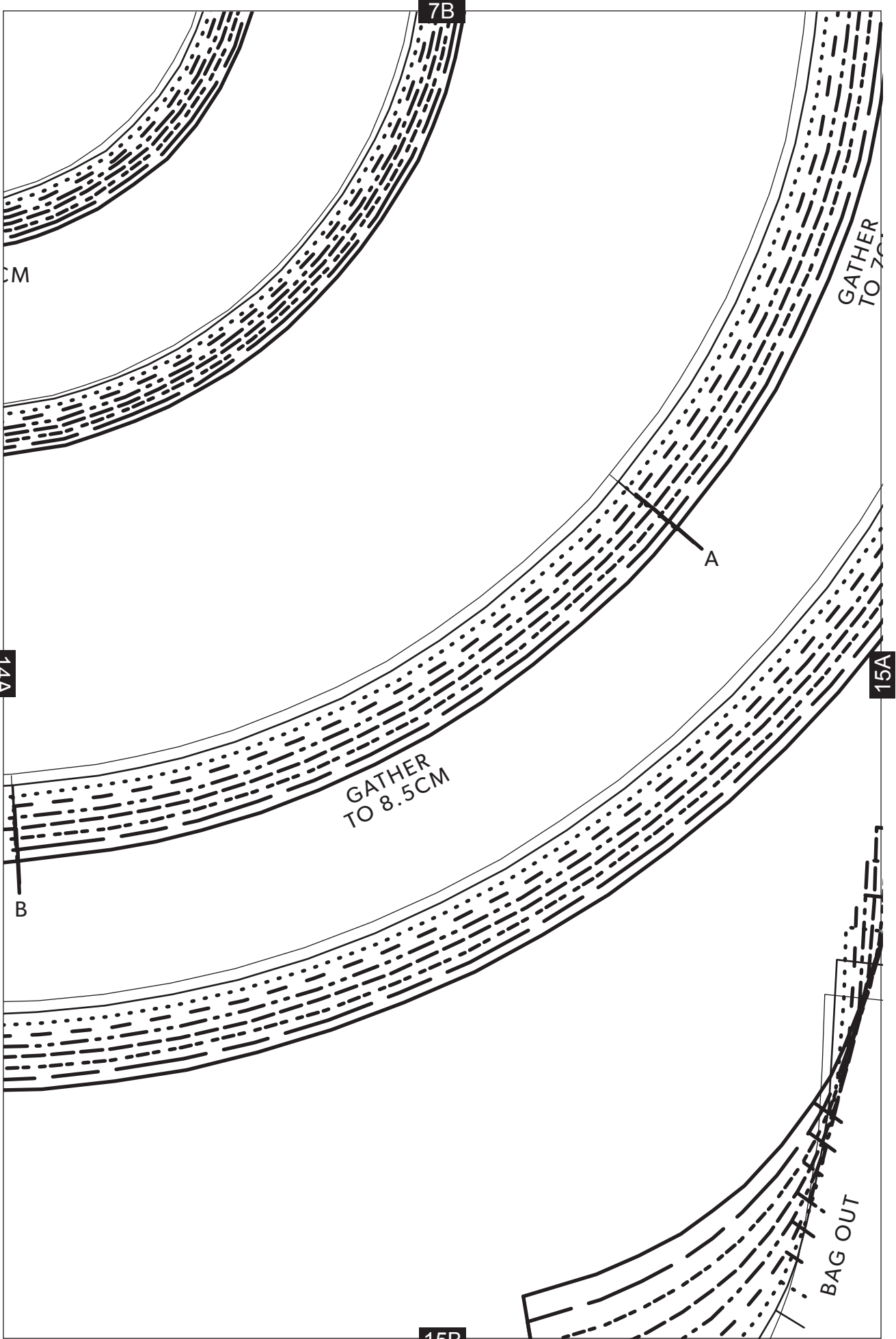
14A

C

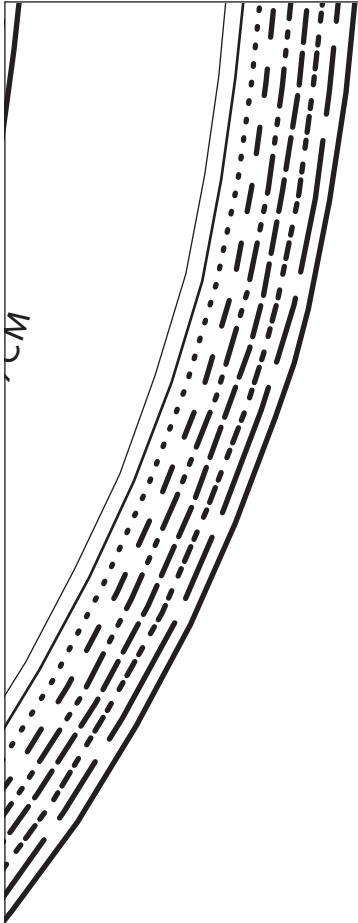
GATHER TO 7CM

14B

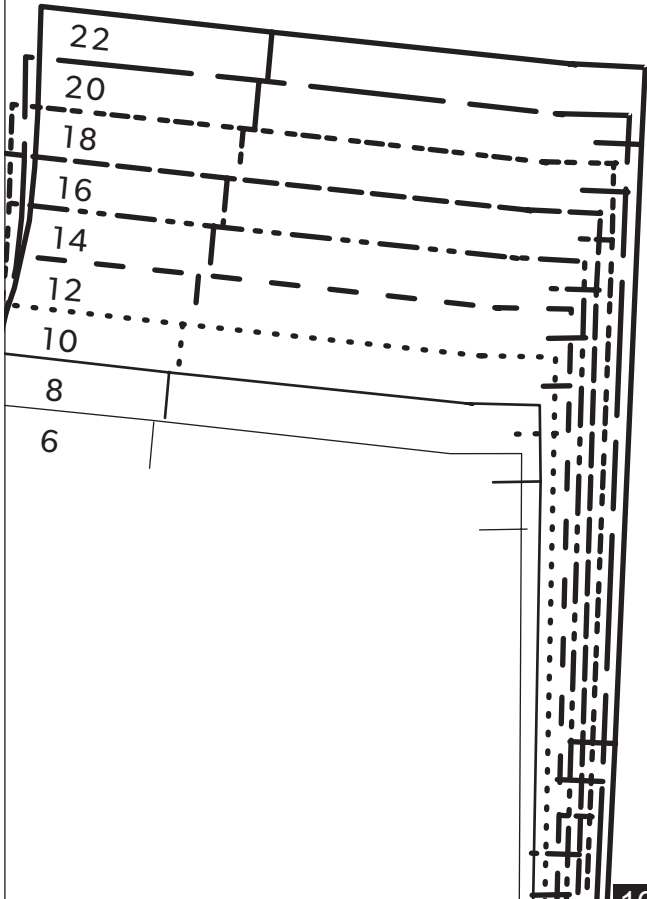




8B



15A



16B

THE BIB DRESS

Bow

Cut 1 main + 1 interfacing on fold



9B

17A

PLACE ON FOLD

THE BIB DRESS

Front bodice

Cut 1 main + 1 lining on fold

17B

D



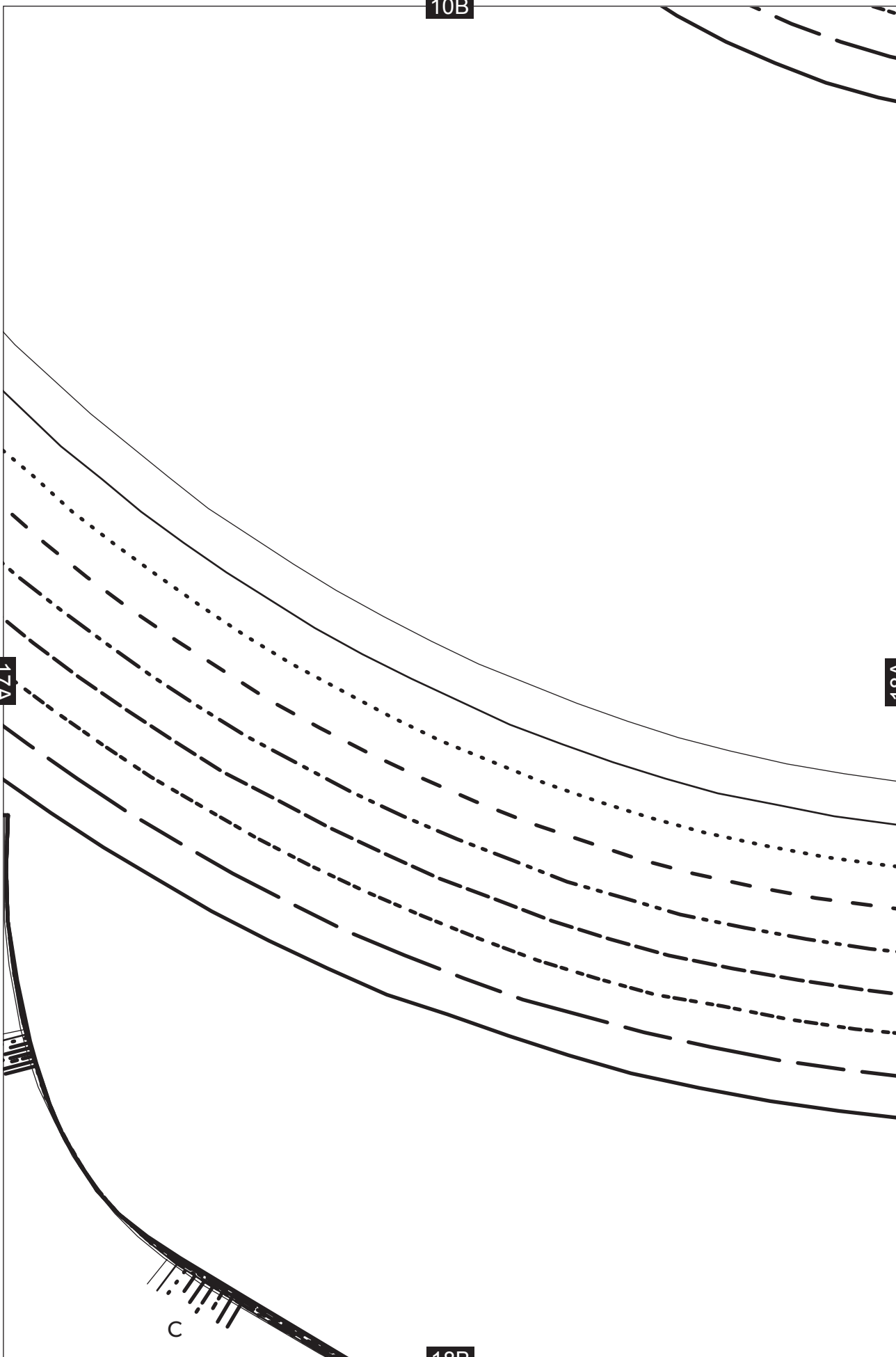
10B

18A

17A

18B

C



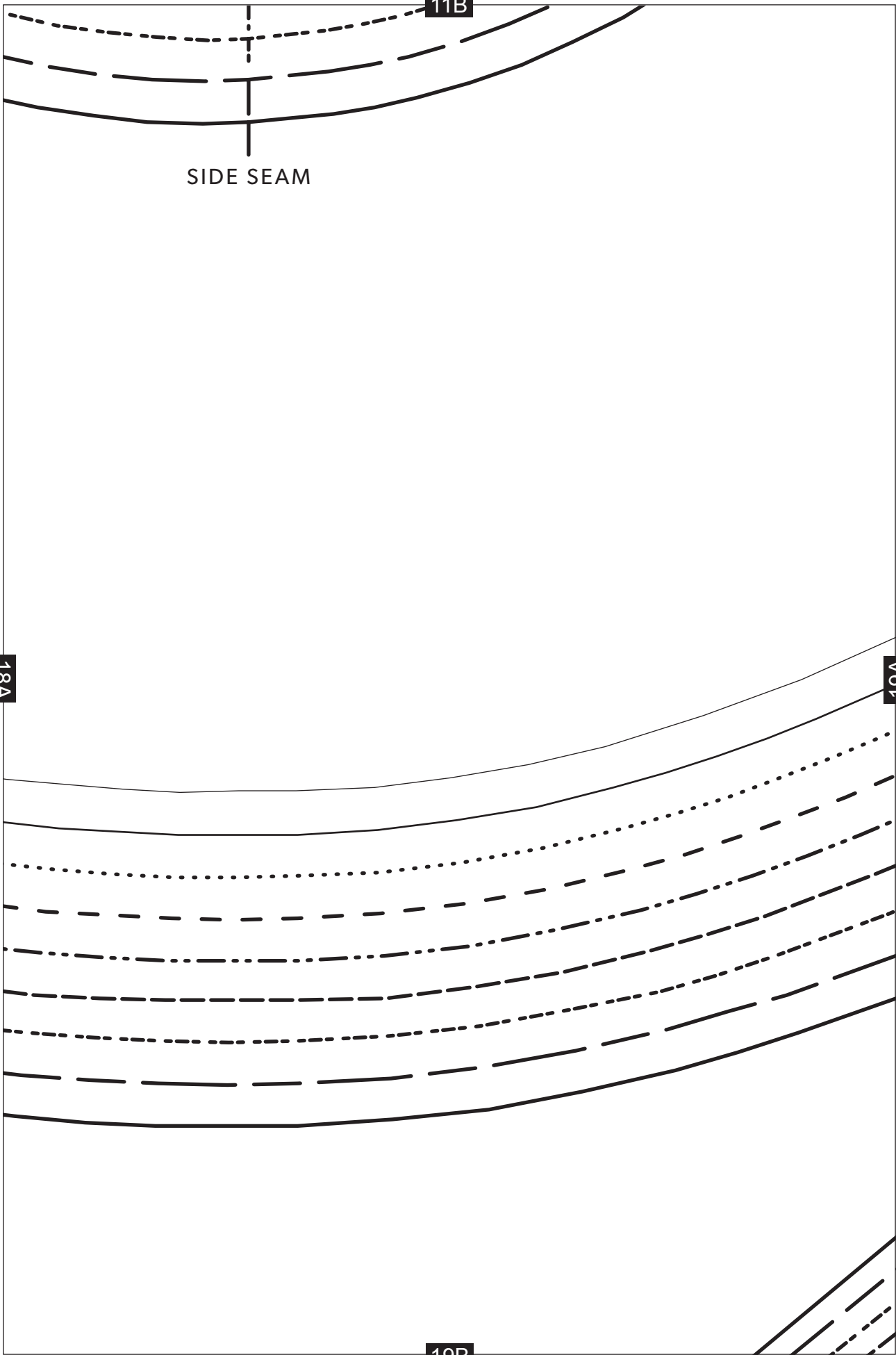
11B

SIDE SEAM

18A

19A

19B

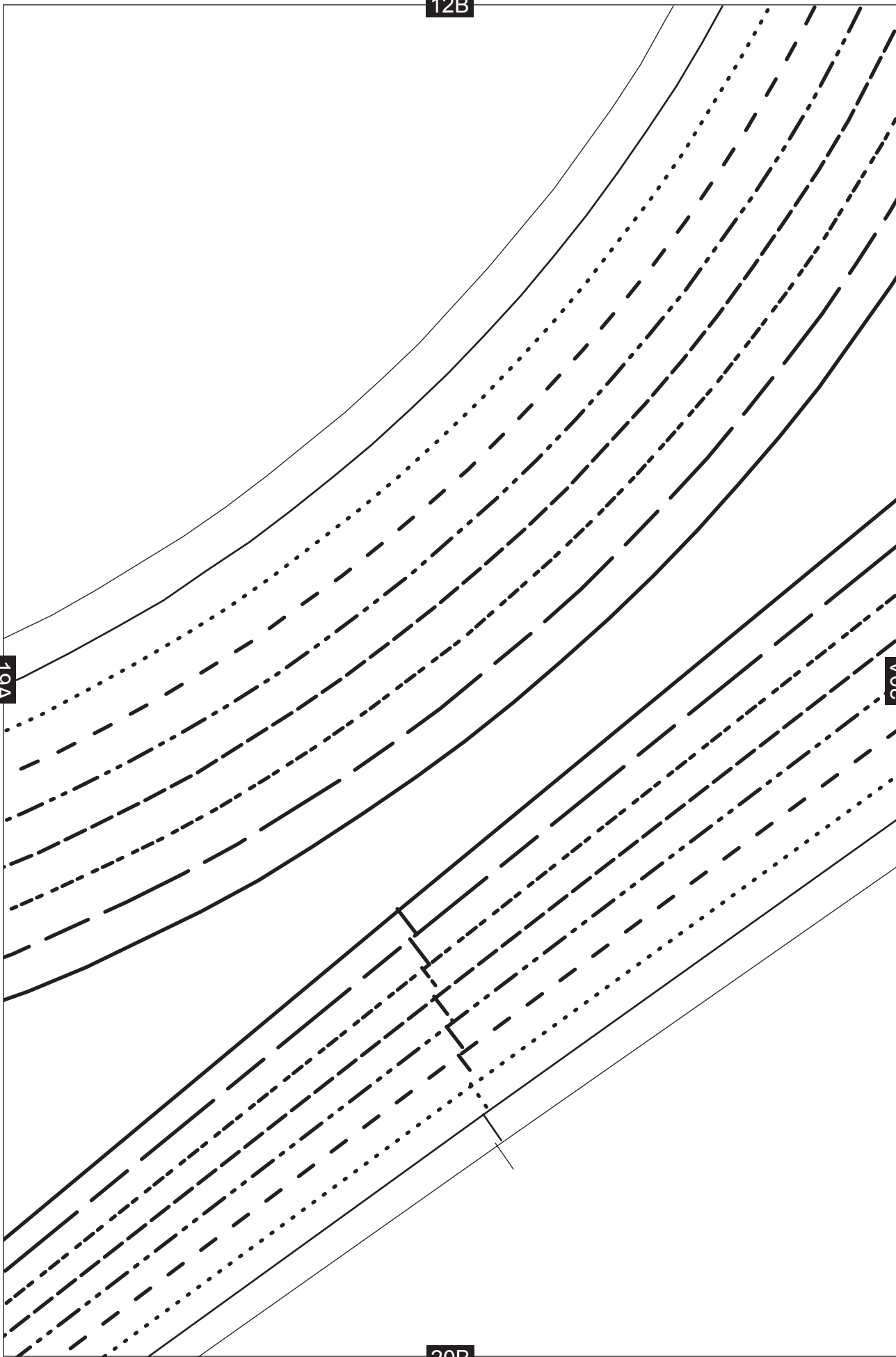


12B

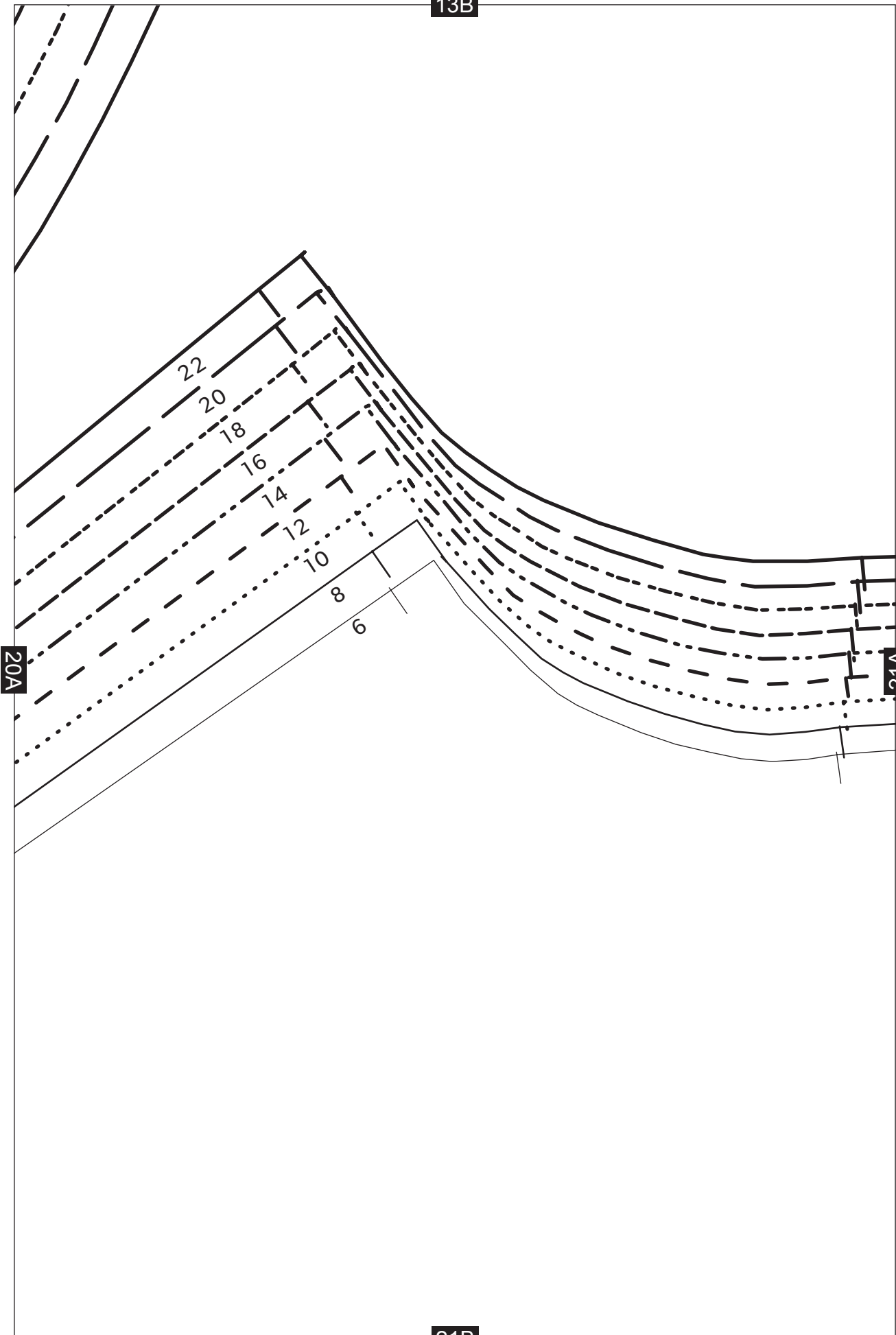
19A

20A

20B



13B

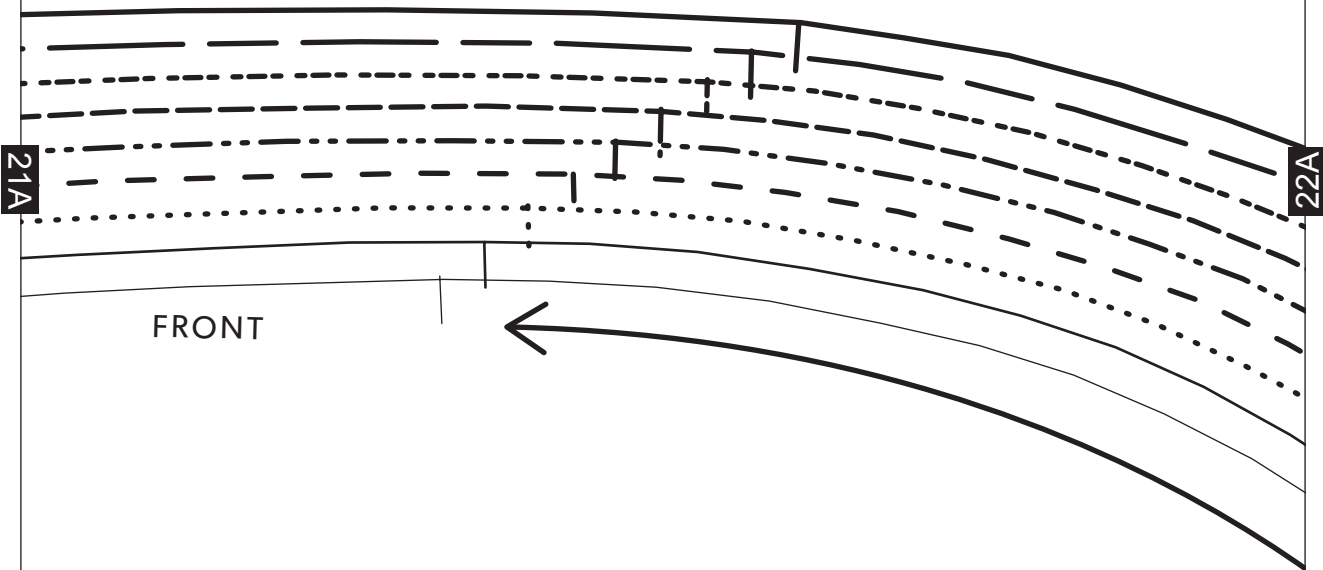


20A

21A

21B

14B



21A

22A

FRONT

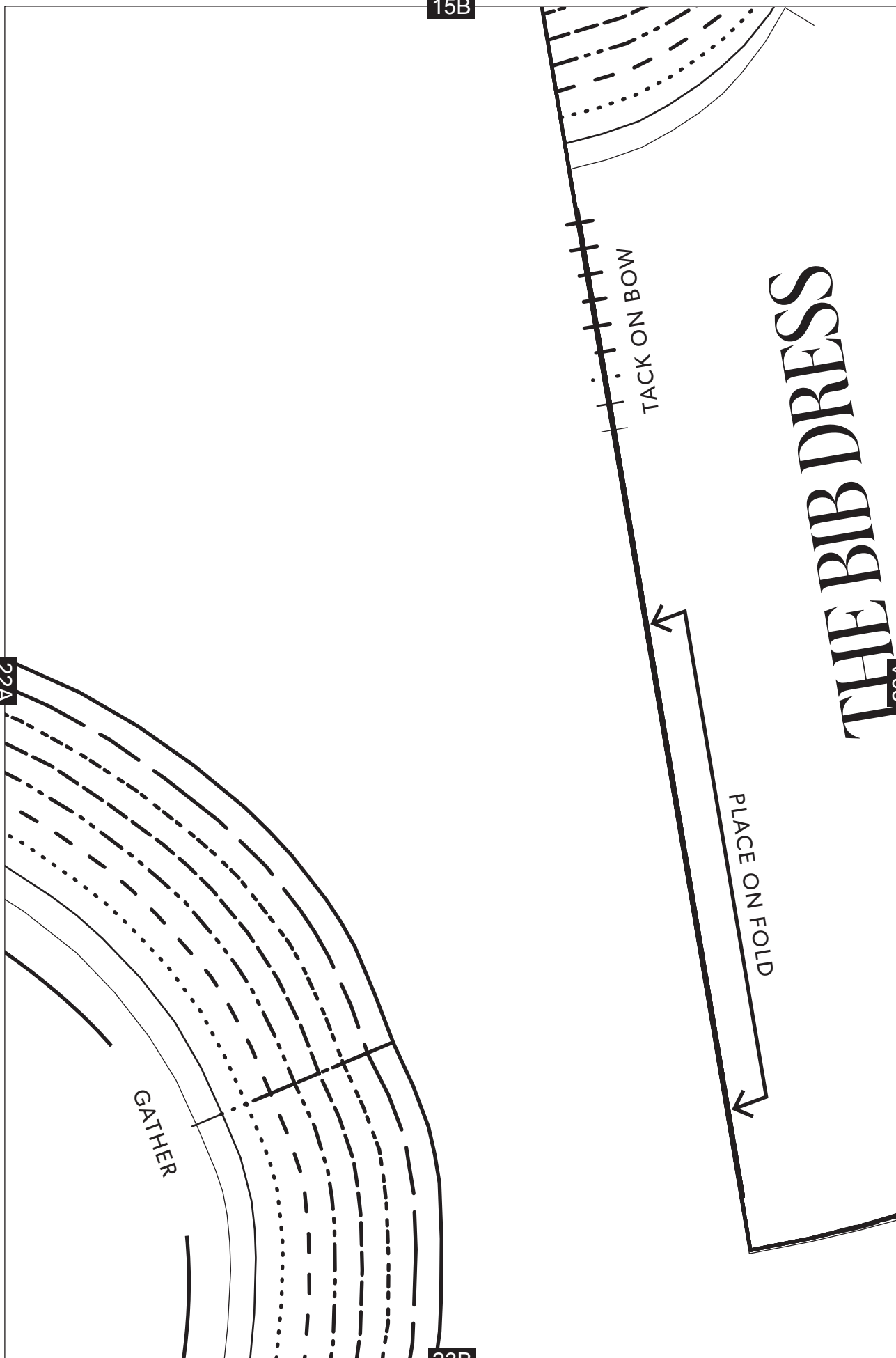
22B

15B

22A

23A

THE BIB DRESS



GATHER

TACK ON BOW

PLACE ON FOLD

23B

23A

Bib
Cut 1 main + 1 lining on fold

GRAINLINE

C

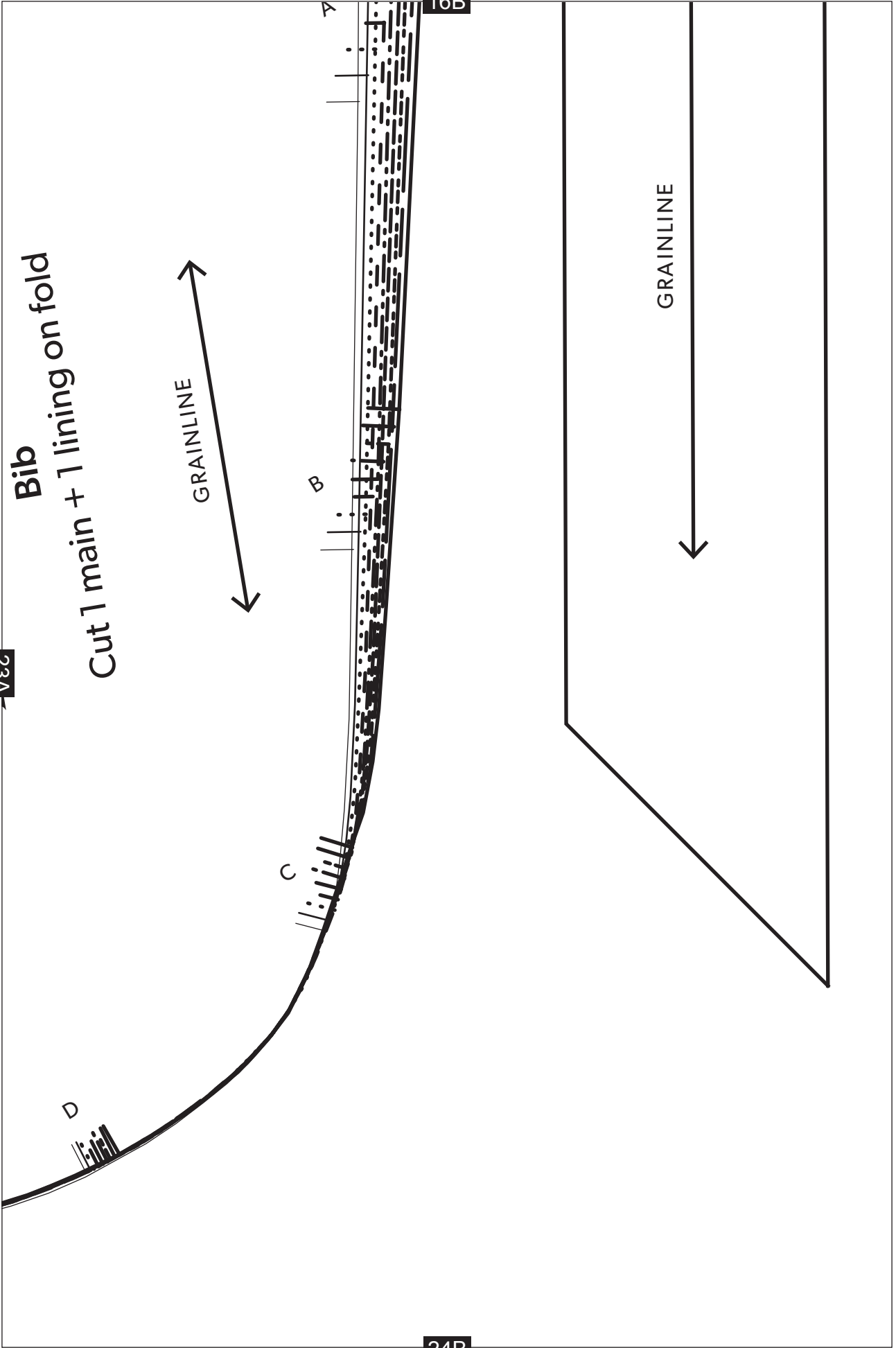
B

A

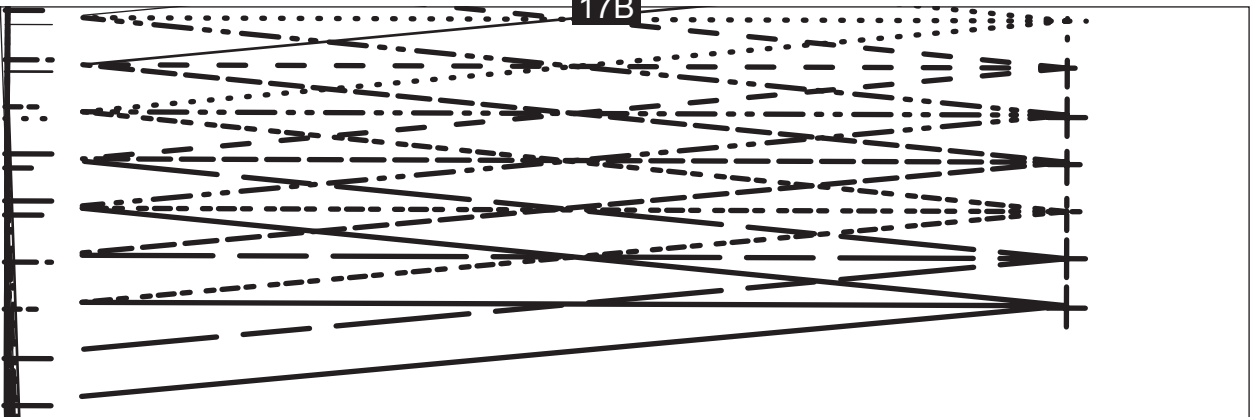
16B

GRAINLINE

24B



17B



GRAINLINE



9

8

10

12

14

16

18

20

22

25A

25B

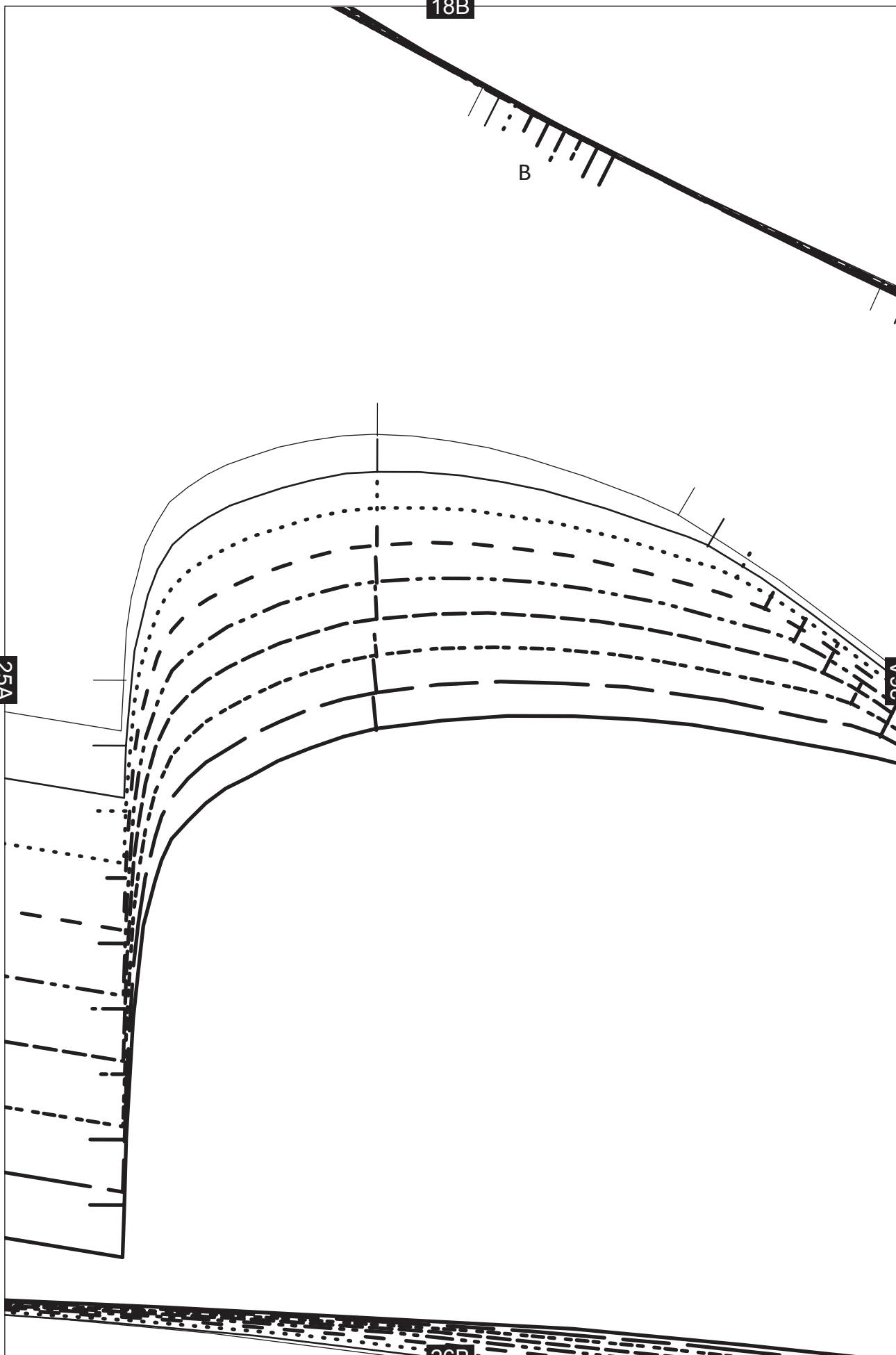
18B

B

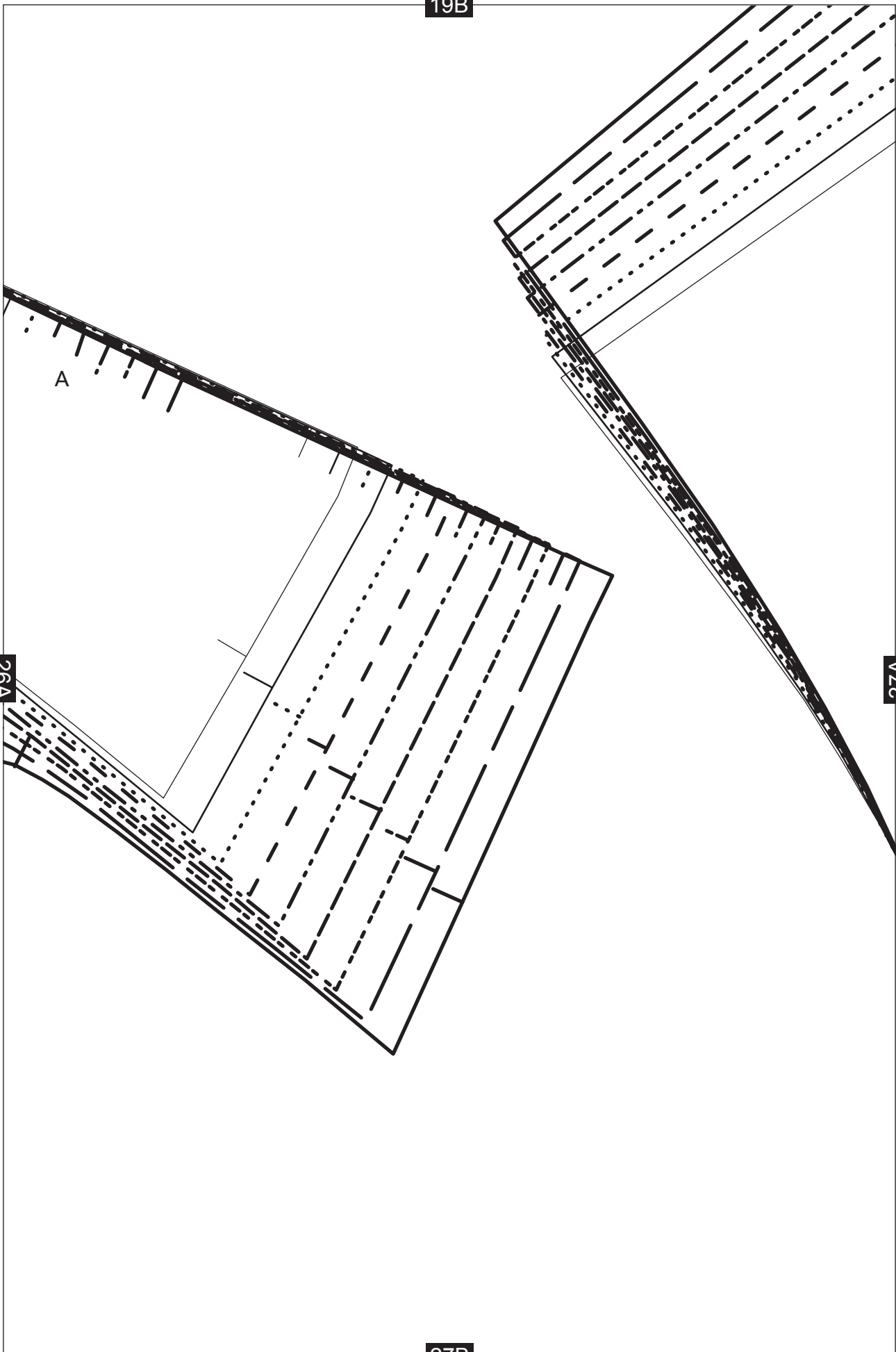
25A

26A

26B



19B



A

26A

27A

27B

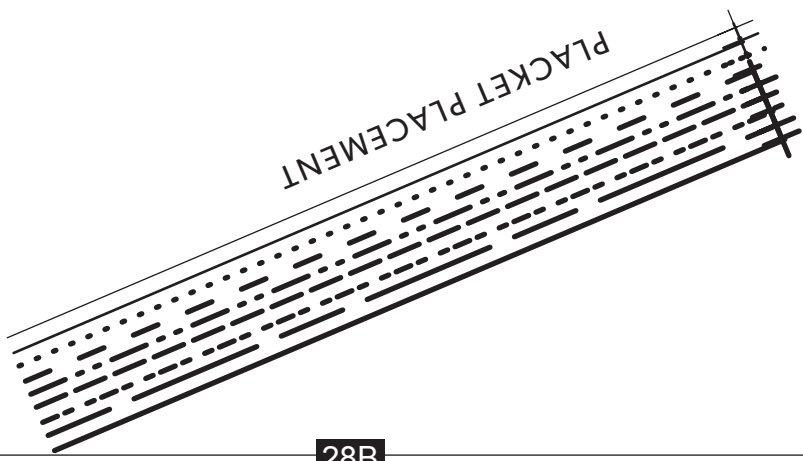
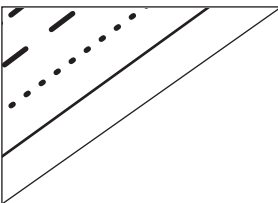
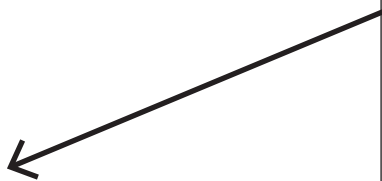
20B

27A

28A

PLACKET PLACEMENT

28B



21B

GRAINLINE

Sleeve
Cut 2

THE BIB DRESS

28A

29A

29B

22B

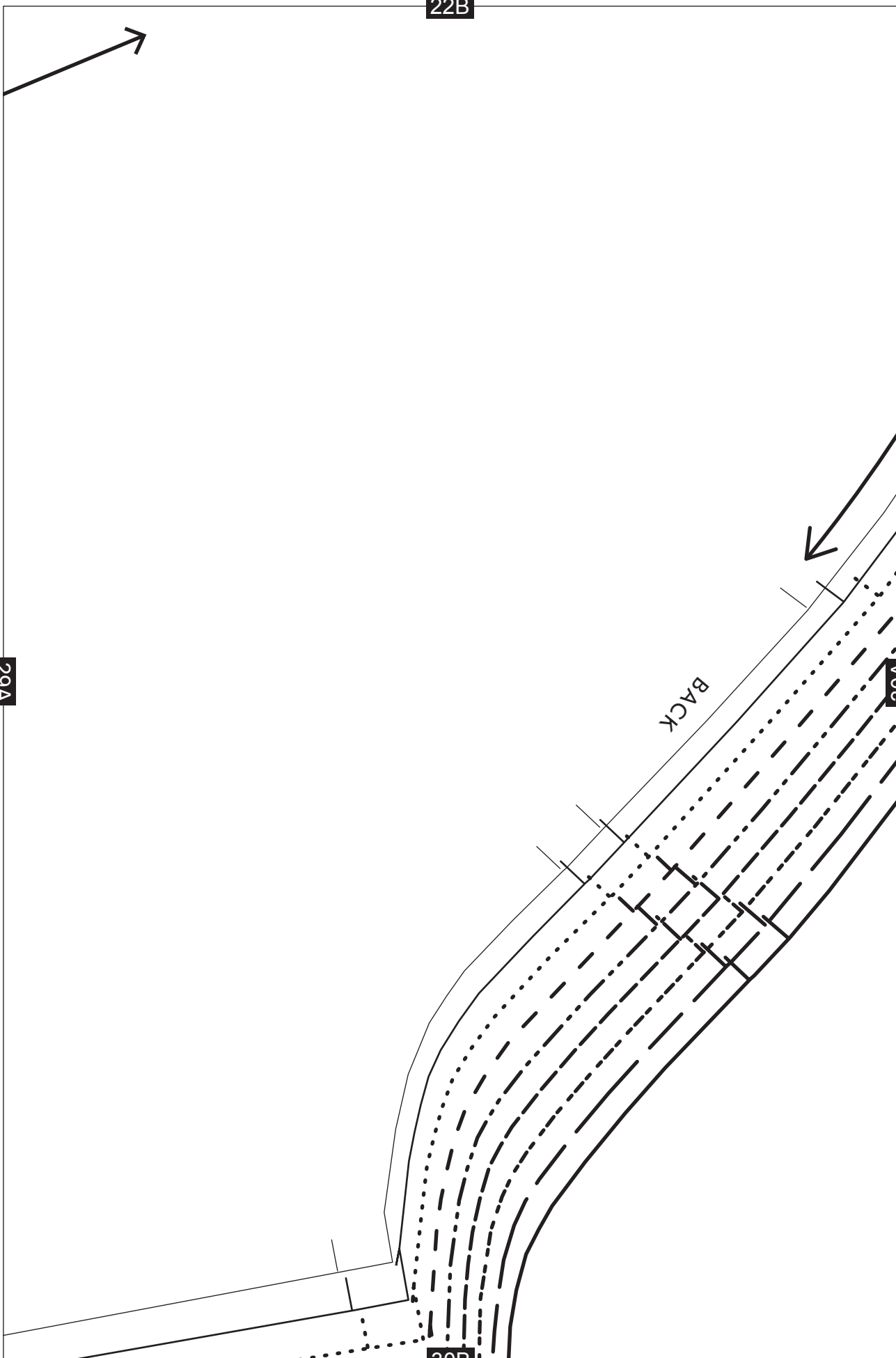


29A

BACK

30A

30B

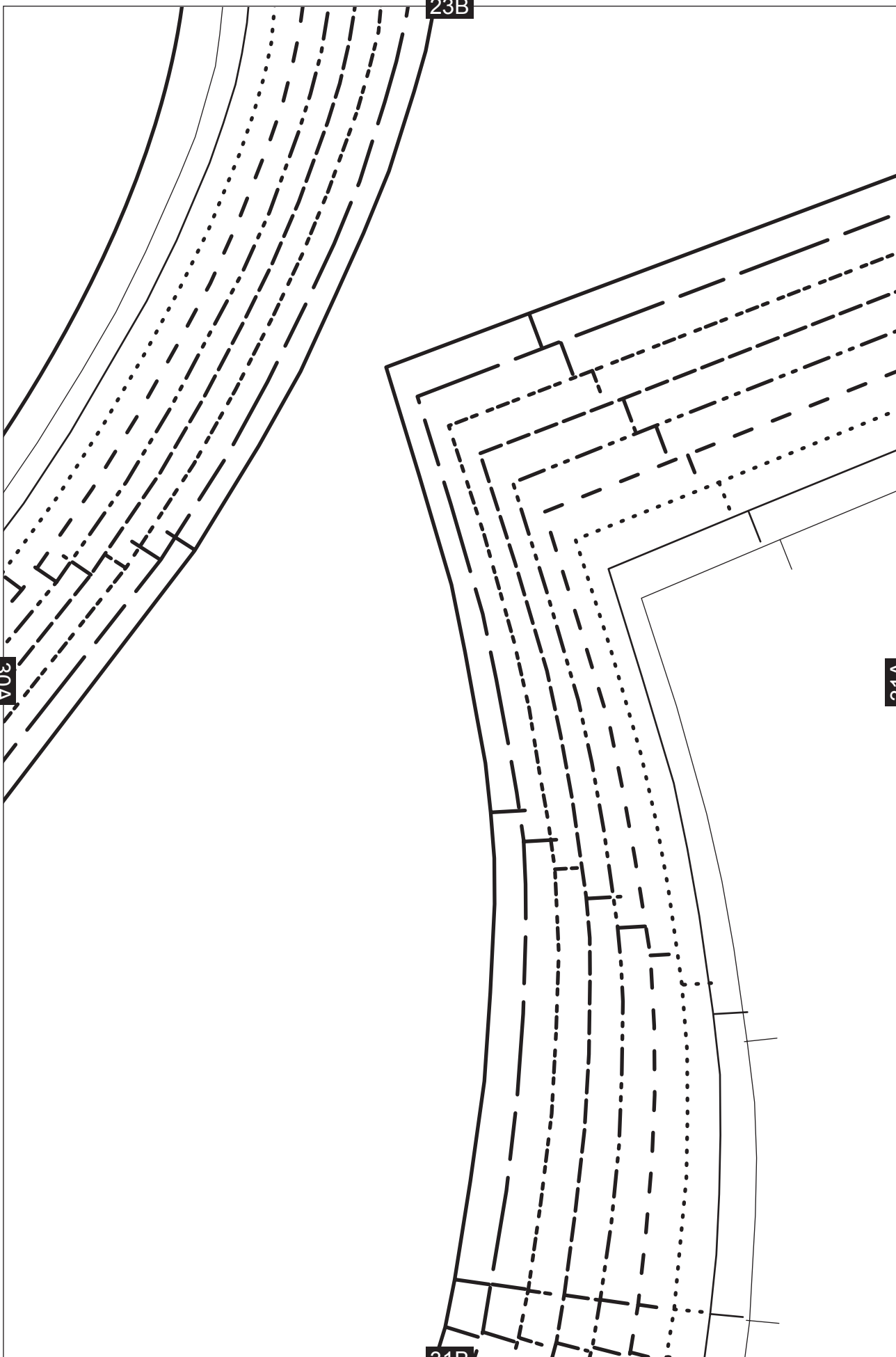


23B

30A

31A

31B



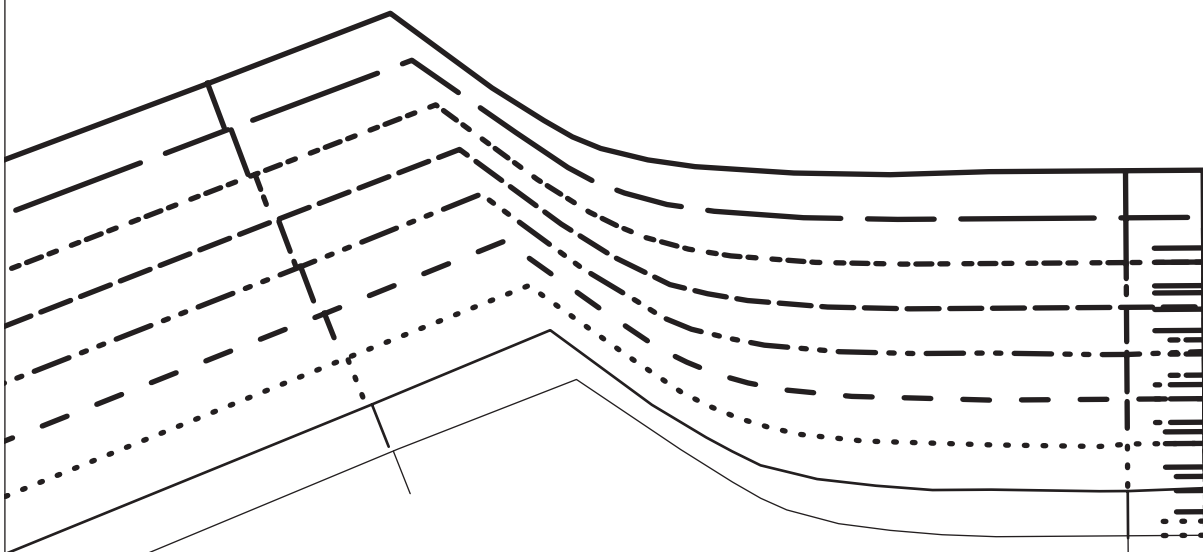
24B

31A

BIB DRESS

Back bodice
2 main + 2 lining

GRAINLINE



0.5CM EASE

HOOK AND EYE

CENTRE BACK

INVISIBLE ZIP

32B

Skirt back
Cut 2

33A

GRAINLINE



25B

33B

CENTRE BACK



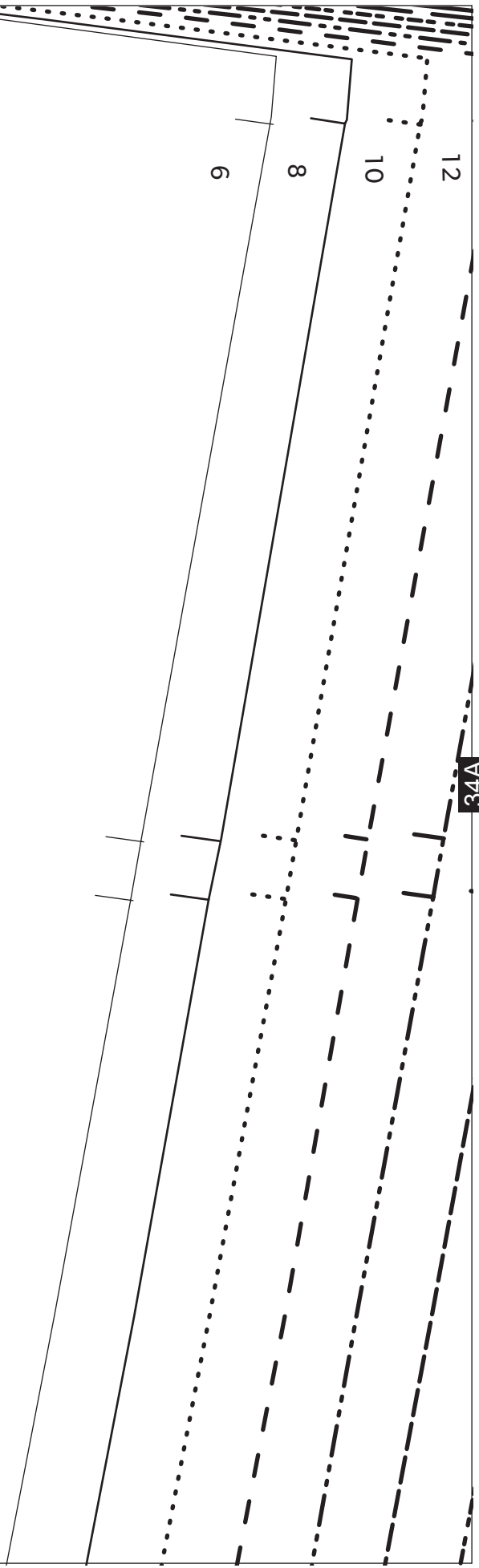
THE BIB DRE

33A

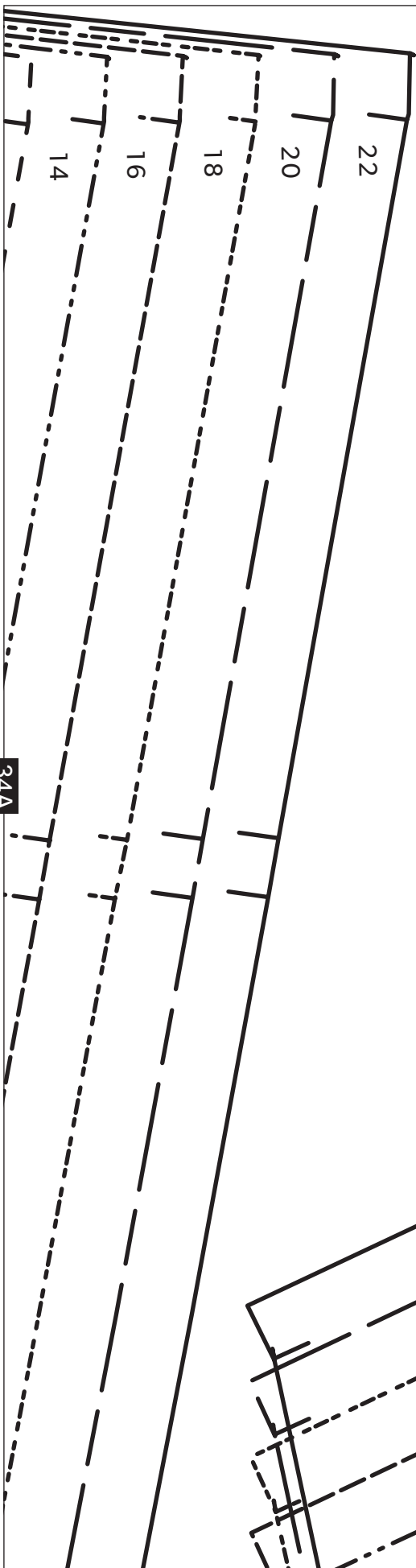
26B

34B

34A

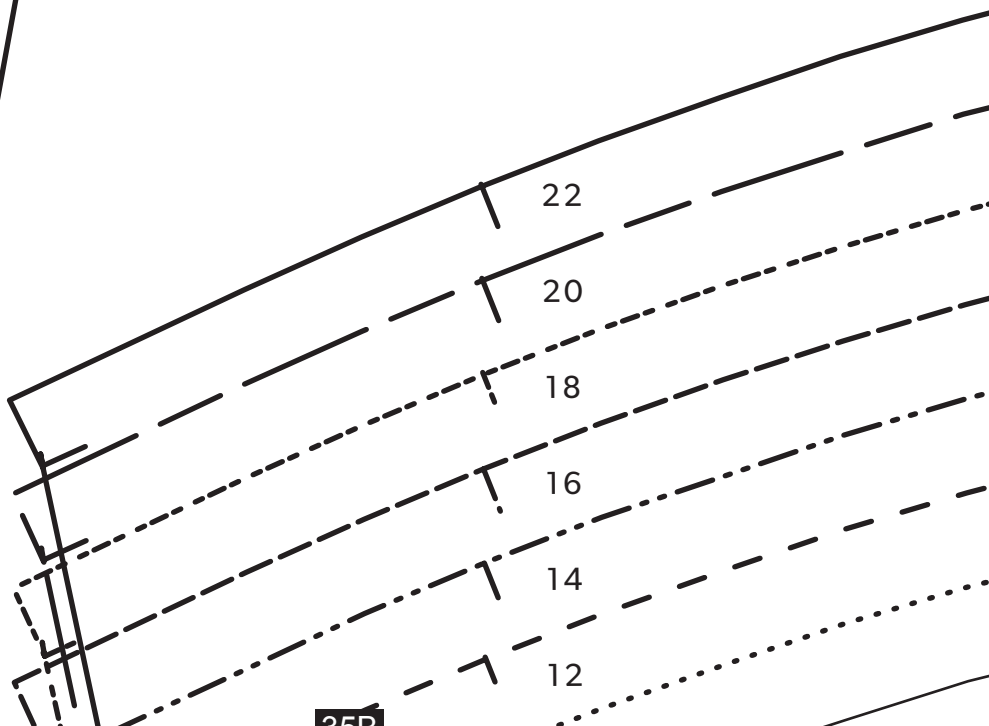


27B



34A

35A



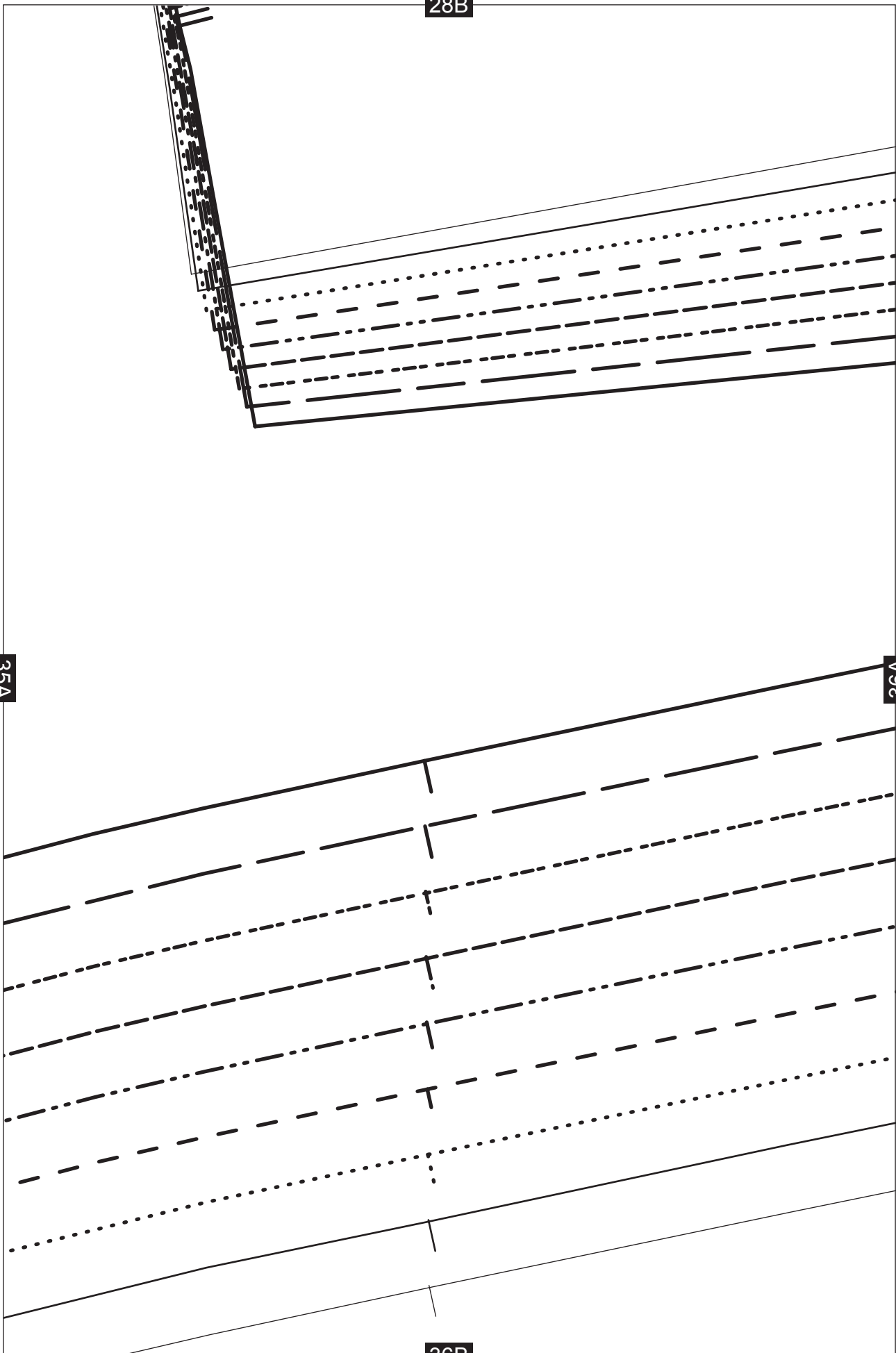
35B

28B

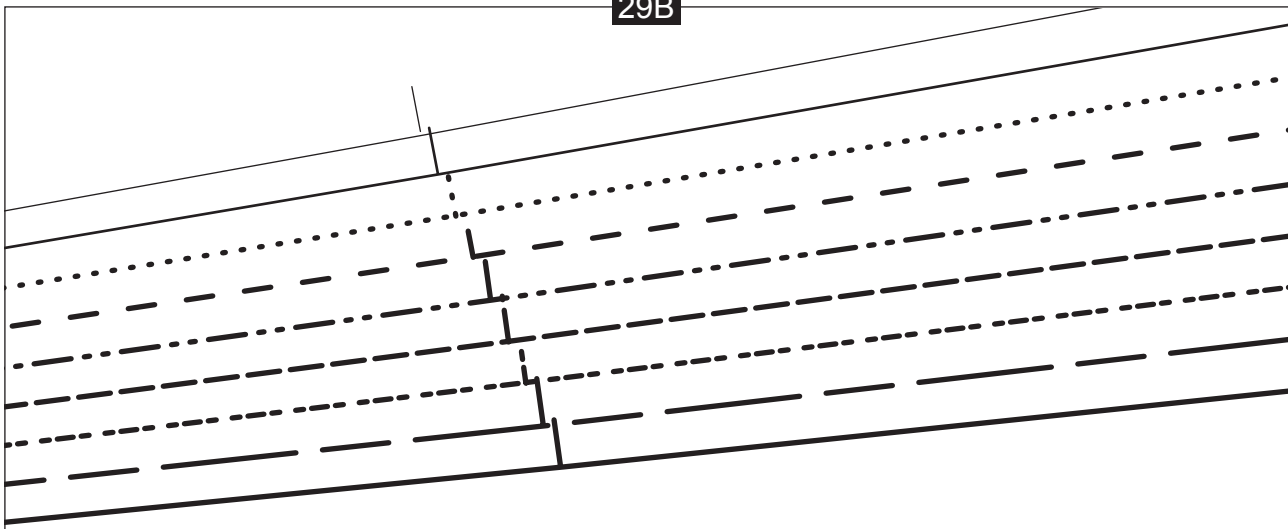
35A

36A

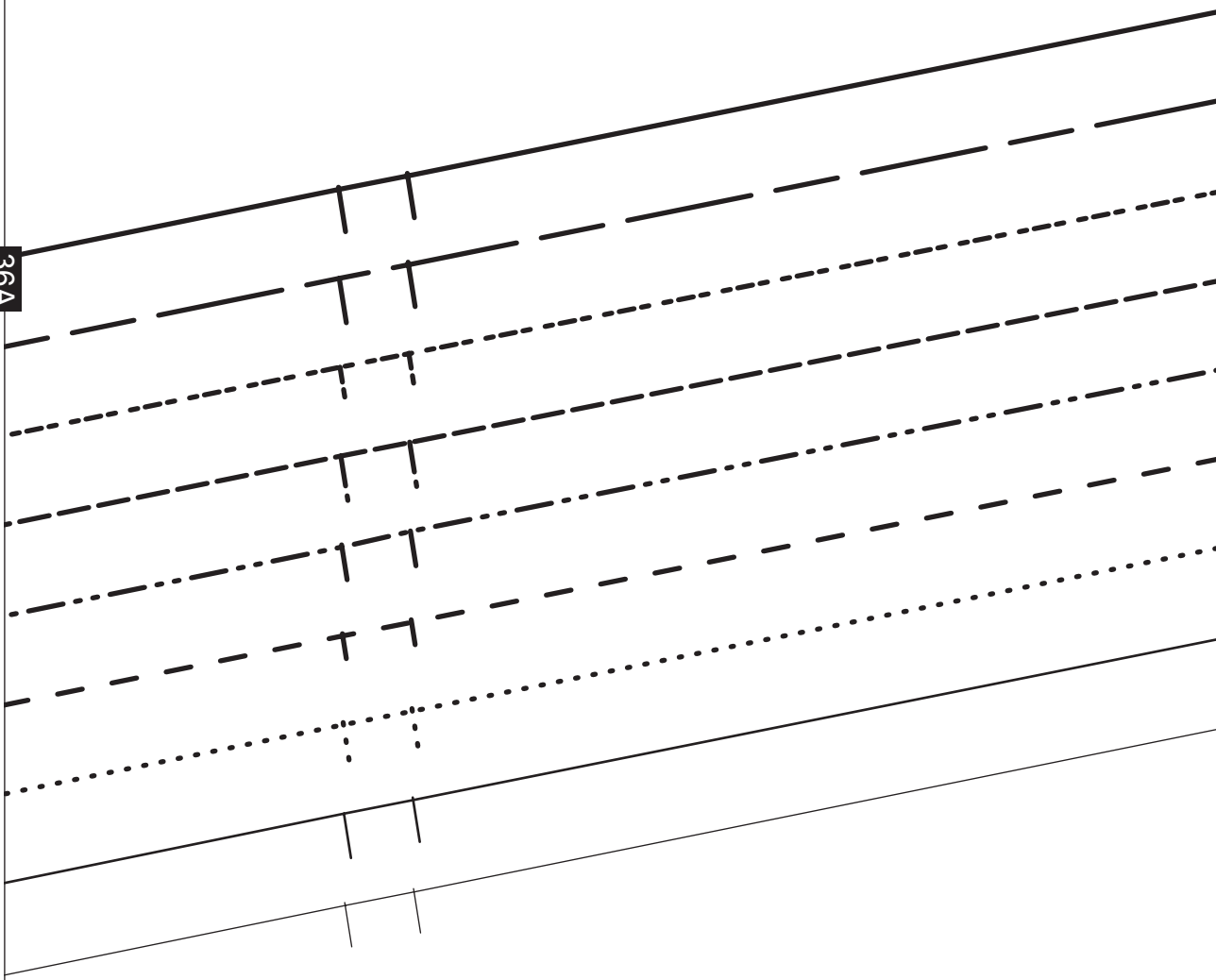
36B



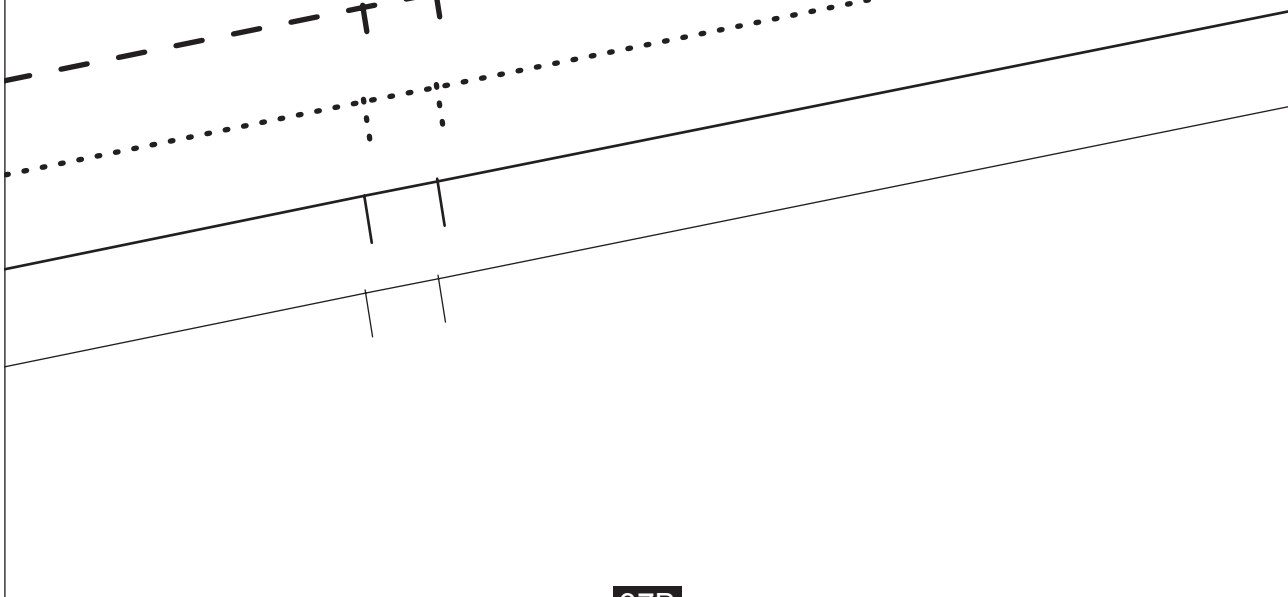
29B



36A



37B



38A



SEAM

THE BIB DRESS

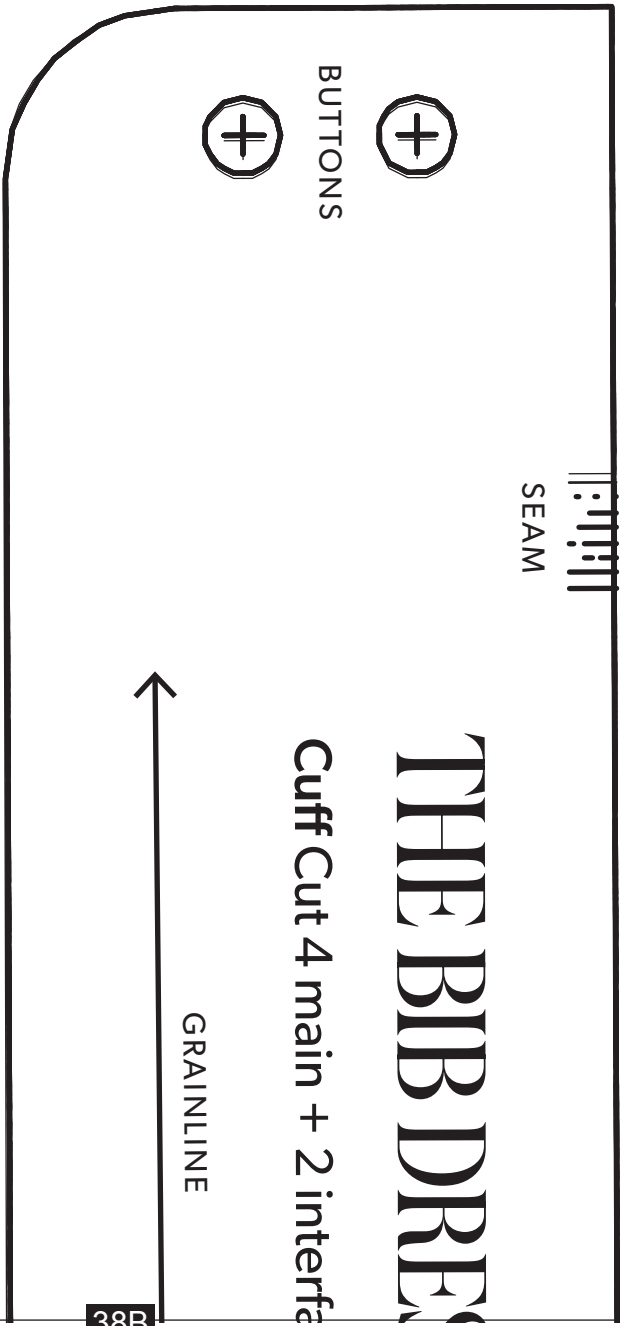
Cuff Cut 4 main + 2 interf

GRAINLINE

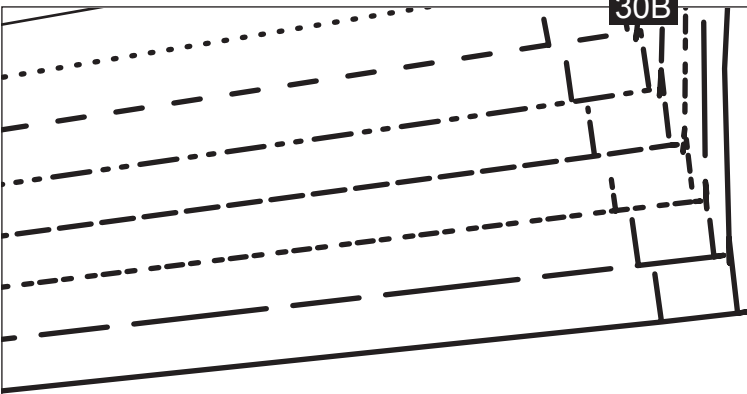


BUTTONS

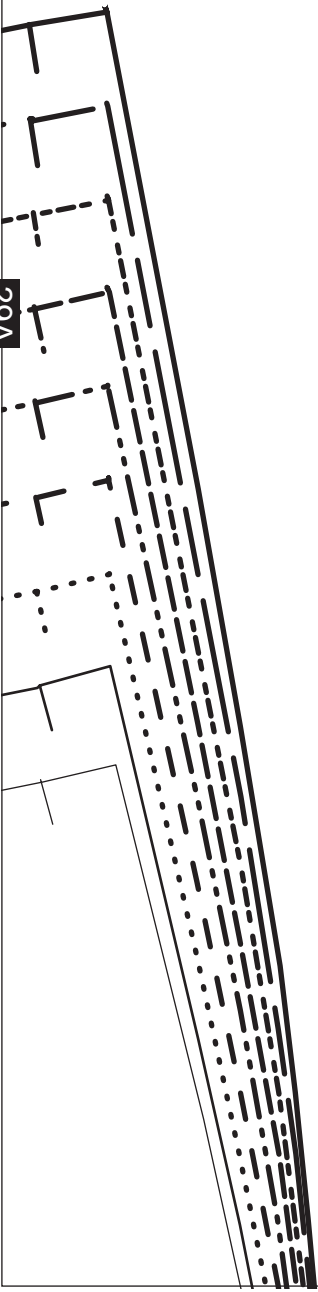
38B



30B



29A



38A

22

20

18

16

14

12

10

8

6

31B

39A



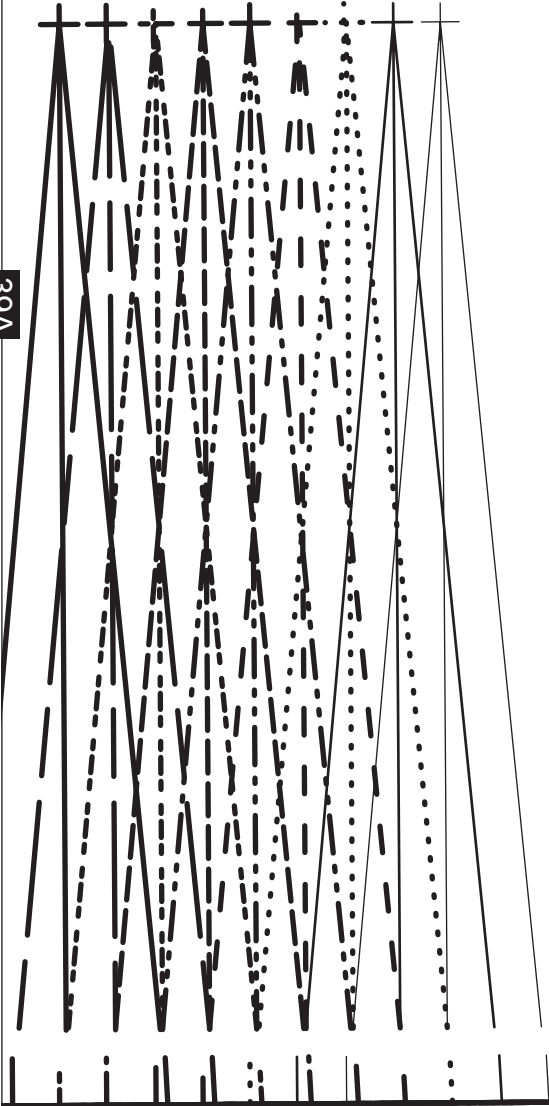
THE

Cut

32B



39A

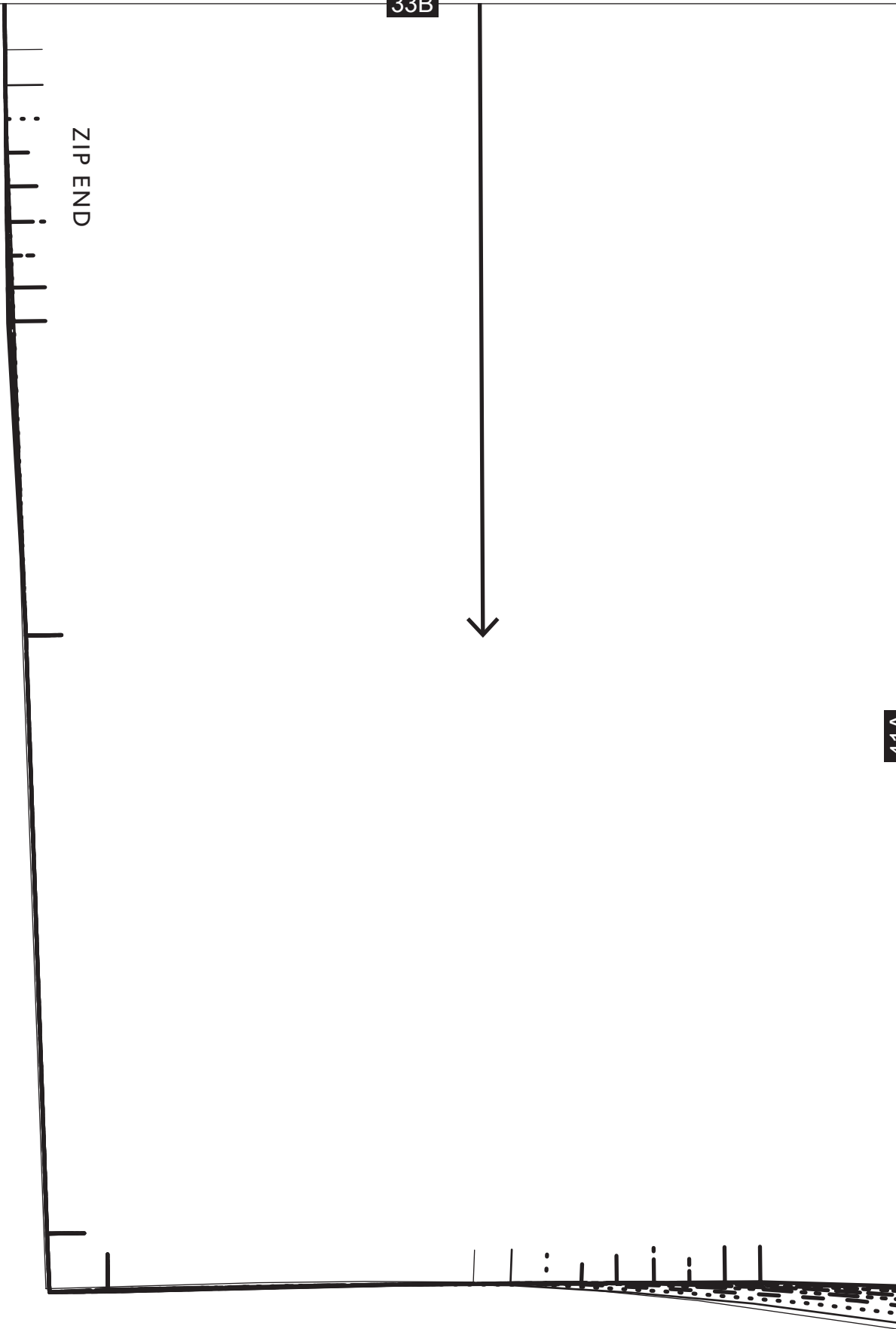


33B

ZIP END



41A

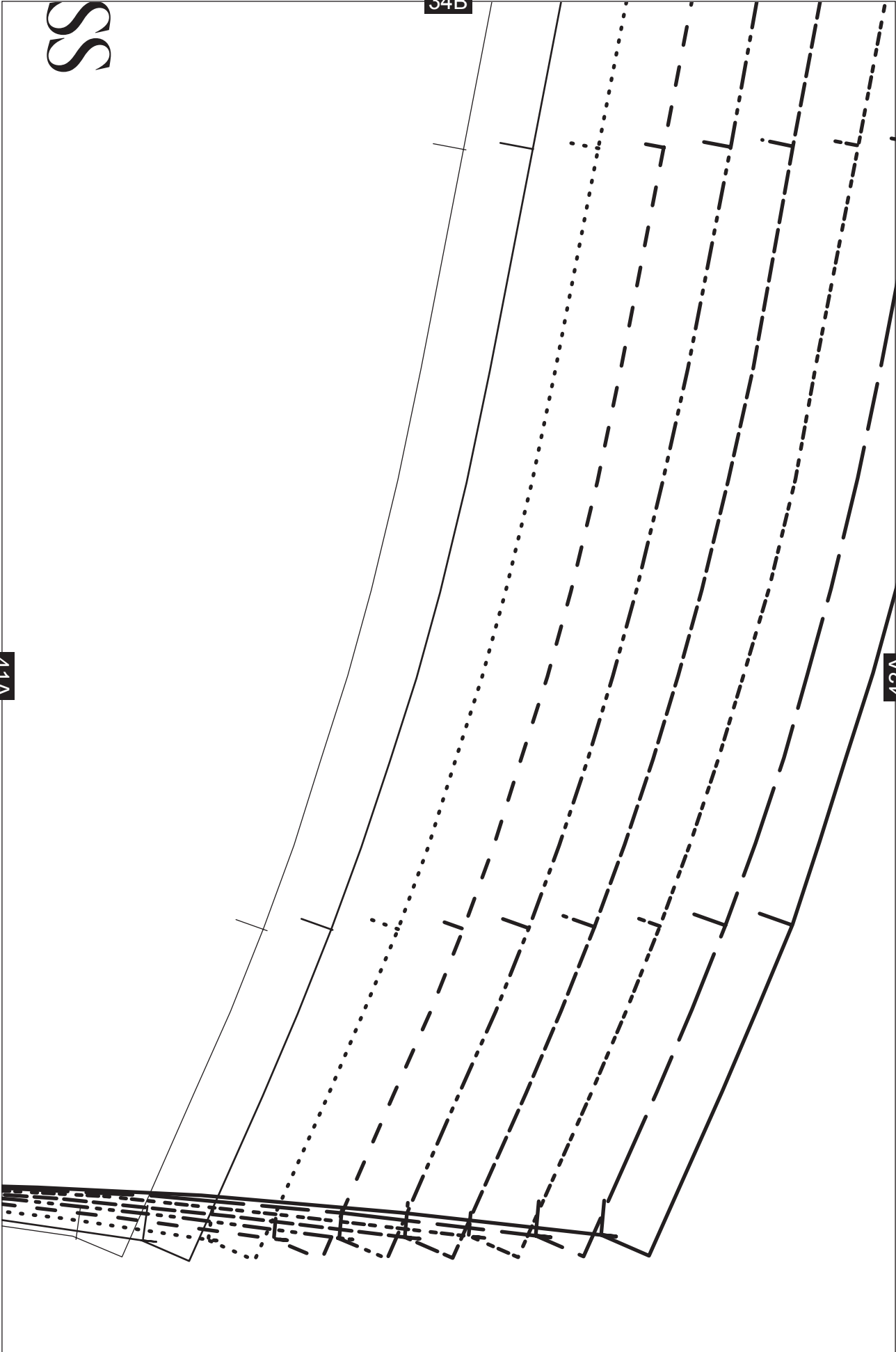


SS

34B

41A

42A



35B

10

8

6

42A

43A

CENTRE FRONT



36B

Skirt front
Cut 1 on fold

THE BIB DRESS

43A



GRAINLINE

44A

PLACE ON FOLD



37B

L

44A



45A

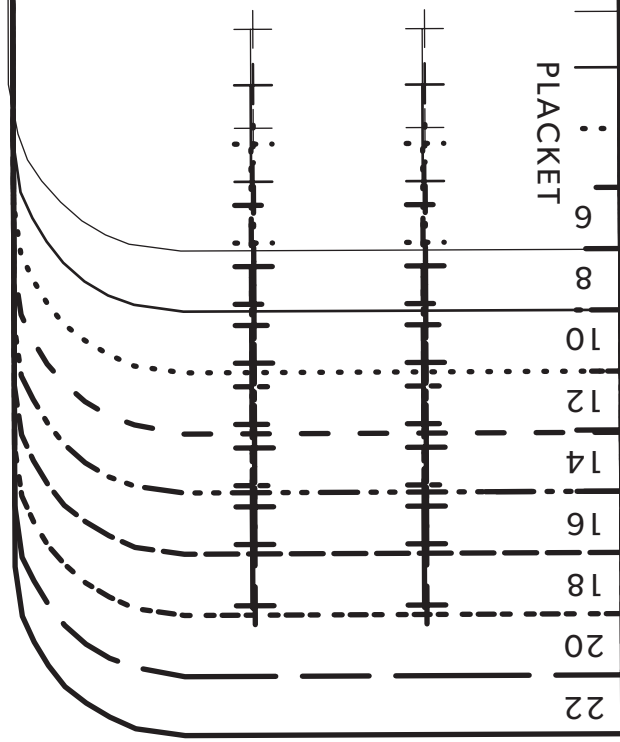


38B

acing
SS

BUTTONHOLES

PLACKET



45A